

# Southwest Calgary Ring Road

## Advisory Notice

June 15th, 2021

### Partial Road Closure at Tsuut'ina Parkway and Tsuut'ina Trail SW

---

**Location:** Tsuut'ina Parkway and Tsuut'ina Trail SW

**Impacts:**

- Southbound Tsuut'ina Trail SW to Eastbound Tsuut'ina Parkway Closed
- Westbound Tsuut'ina Trail SW to Southbound Tsuut'ina Trail SW Closed

**Reason:** Final road construction and paving

**Implementation Date:** Monday, June 21<sup>st</sup> to Monday, July 5<sup>th</sup>

**Work hours:** 24/7

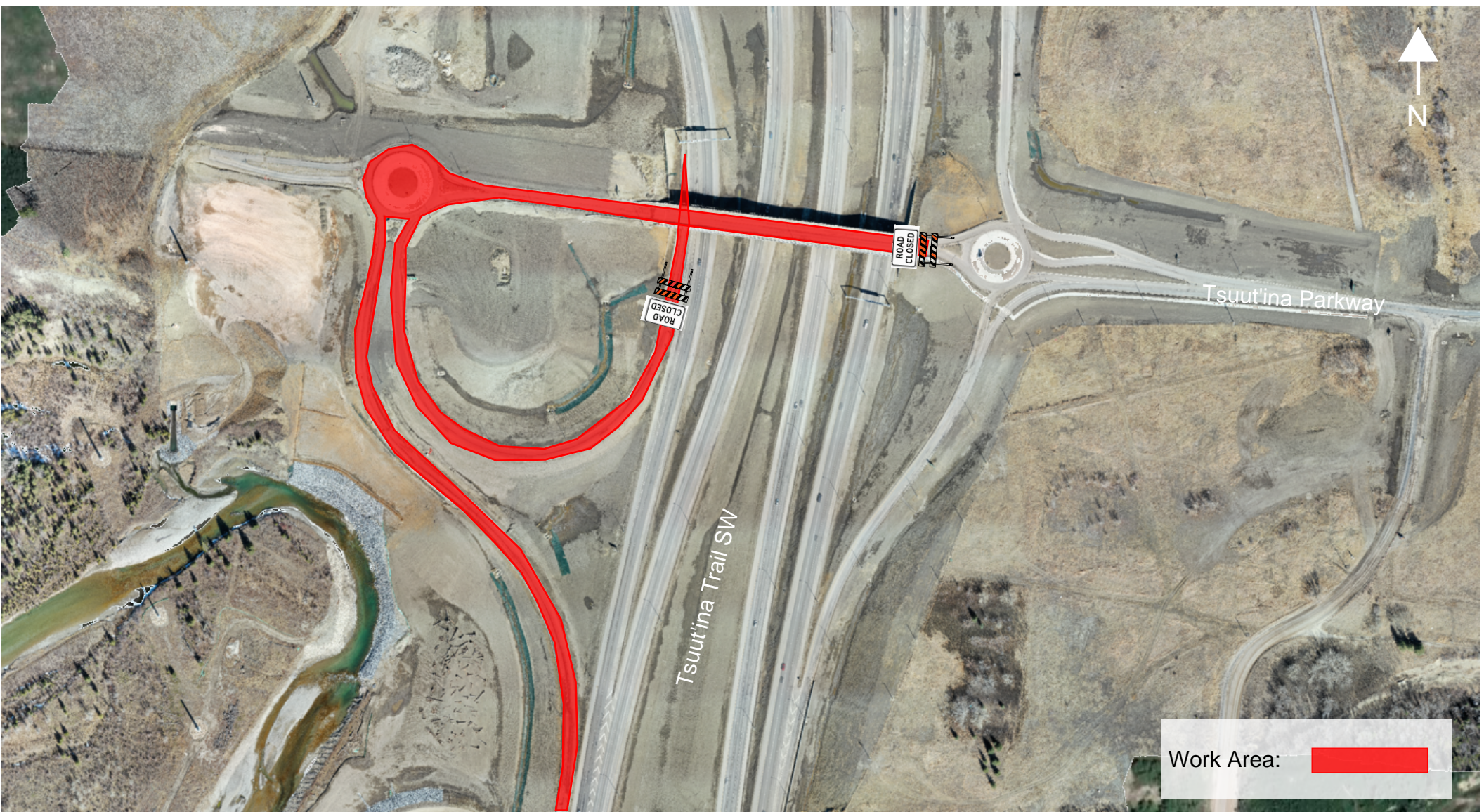
**Speed limit:** N/A

**Other information:** Traffic control will remain in place for the full 14-day duration. There will be signs in place directing drivers around the work zone and to the alternate route. Please note this work is weather dependent, and dates may change.

For your safety, please obey all construction signs when travelling through the area. KGL Constructors would like to thank you for your patience during this construction period.



Tsuut'ina Parkway and Southbound Tsuut'ina Trail SW  
Full Closure - Work Area  
Monday, June 21st to Monday, July 5th 24/7





Tsuut'ina Parkway and Southbound Tsuut'ina Trail SW  
Full Closure and Traffic Detour  
Monday, June 21st to Monday, July 5th 24/7

VMB will be placed prior to exit  
point for Glenmore Trail SW

