

Southwest Calgary Ring Road

Advisory Notice

June 2nd, 2021

Numerous Closures 6th Street SW and Spruce Meadows Way SW

Location: North and southbound 6th Street SW and north and southbound Spruce Meadows Way SW

Impacts:

- Right and left lane closures

Reason: To allow KGL to perform curb removal and concrete pour

Implementation Date: Wednesday, June 2nd to Monday, June 14th

Work hours: 24/7

Speed limit: N/A

Other information There will be signs in place directing drivers through the work zone. Please note this work is weather dependent, and dates may change.

For your safety, please obey all construction signs when travelling through the area. KGL Constructors would like to thank you for your patience during this construction period.

403-212-0565
info@SWCRRproject.co



Northbound & Southbound Lane Closures
Start: Wednesday June 2nd, 2021
End: Monday June 14th, 2021

SitePhotos
Log Out

Layers

Photos

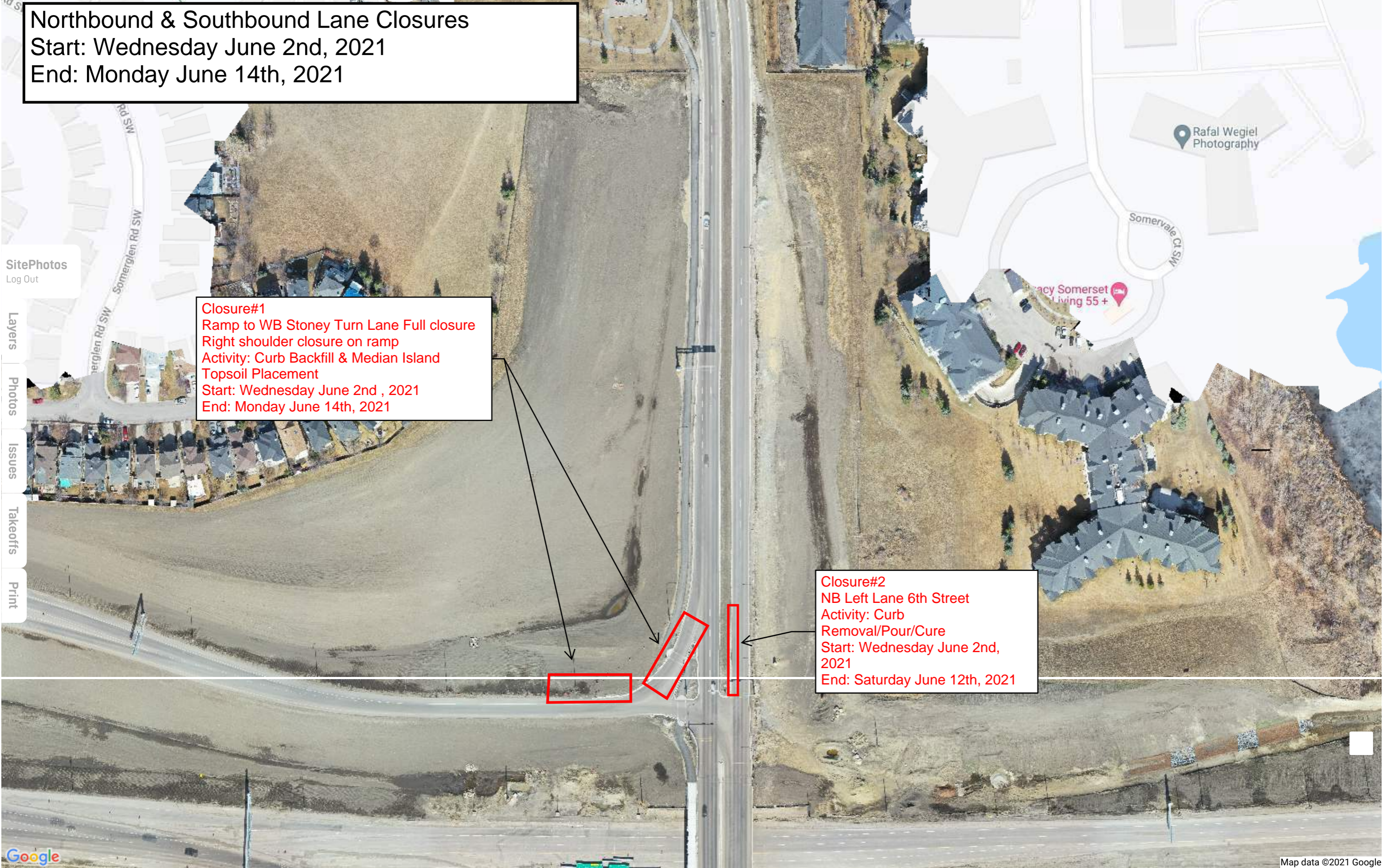
Issues

Takeoffs

Print

Closure#1
Ramp to WB Stoney Turn Lane Full closure
Right shoulder closure on ramp
Activity: Curb Backfill & Median Island
Topsoil Placement
Start: Wednesday June 2nd , 2021
End: Monday June 14th, 2021

Closure#2
NB Left Lane 6th Street
Activity: Curb
Removal/Pour/Cure
Start: Wednesday June 2nd,
2021
End: Saturday June 12th, 2021



Northbound & Southbound Lane Closures South of BR14
Start: Wednesday June 2nd, 2021
End: Monday June 14th, 2021

Closure #1
SB Sheriff King Street Left Lane
Activity: Curb Removal and Replace
Start: Wednesday June 2nd, 2021
End: Saturday June 12th, 2021

Closure #2
EB Stoney to NB 6th Street Ramp
Activity: Curb Remove and Replace, Build spillway
Start: Wednesday June 2nd, 2021
End: Monday June 14th, 2021

Closure #3
SB Sheriff King Street Right Lane Closure
Activity: Curb Fine Grading/Place/Cure
Start: Wednesday June 2nd, 2021
End: Saturday June 12th, 2021

Closure #4
NB Sheriff King Street Right Lane
Activity: Curb Fine Grading/Place/Cure
Start: Wednesday June 2nd, 2021
End: Saturday June 12th, 2021

SitePhotos
Log Out

Layers

Photos

Issues

Takeoffs

Print

mon SW

Silverado Skies Link SW

Silverado Creek Crescent SW

Silverado Blvd SW

Silverado Dr

ado Point Way SW

Silverado Blvd

Silverado Range

ng St

City of Calgary - Adopt-A-Rink...

Google

Stoney Trail WB to James Mckevitt Rd NB Turnlane
Closure
Start: Wednesday June 2nd, 2021
End: Friday June 11th, 2021

Stoney Trail WB to James Mckevitt
Rd NB Turnlane Closure
Activity: Curb Remove/Replace/Cure
Start: Wednesday June 2nd , 2021
End: Friday June 11th, 2021



Northbound & Southbound Lane Closures
Start: Wednesday June 2nd, 2021
End: Monday June 14th, 2021

SitePhotos
Log Out

Layers

Photos

Issues

Takeoffs

Print

Closure #1
SB Spruce Meadows Way Right Lane/188th Ramp Shoulder
Activity: Curb prep/pour/Cure/Spillway Construction
Start: Wednesday June 2nd , 2021
End: Monday June 14th, 2021

Closure #2
SB to EB Stoney Left Lane Closure
Activity: Curb Remove/Replace/Cure
Start: Wednesday June 2nd , 2021
End: Friday June 11th, 2021

Closure #4
EB Stoney to Spruce Meadows Way
NB Turn lane Full closure
Activity: Curb prep/pour/Cure/Spillway Construction
Start: Wednesday June 2nd , 2021
End: Monday June 14th, 2021

Closure#3
SB Spruce Meadows Way Left Lane
Activity: Curb Removal/Replace/Cure
Start: Wednesday June 2nd , 2021
End: Friday June 11th, 2021