

Southwest Calgary Ring Road

Traffic Advisory

June 24, 2019

Lane Closures at Highway 22X and 6 Street

Location: Intersection of Highway 22X and 6 Street / Sheriff King Street S.W.

Impacts: Ongoing lane closures in all directions approaching the intersection

Reason: Building and paving detour

Start date: Monday, June 3, 2019

Completion date: Tuesday, June 25, 2019

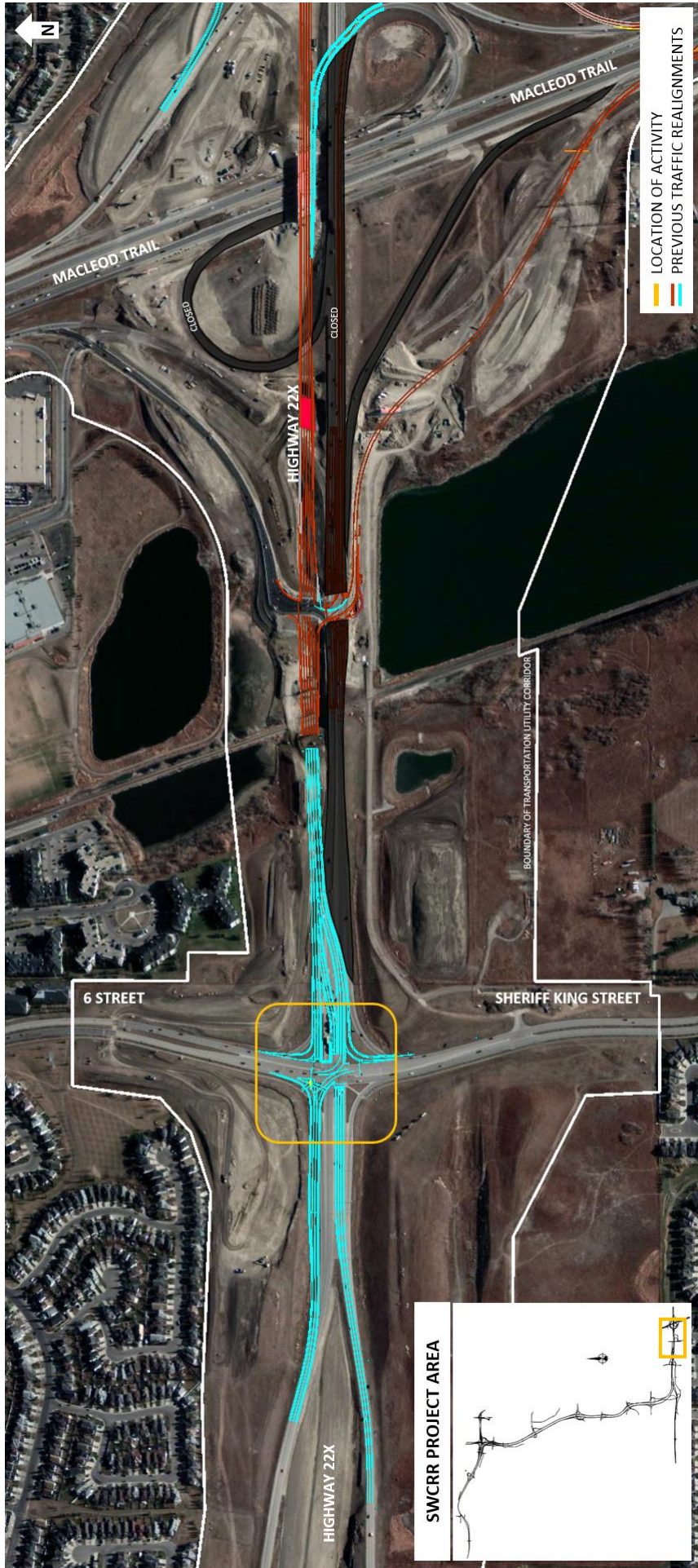
Work hours:

- Weekdays from 9:00 a.m. to 3:30 p.m.
- Saturday from 7:00 a.m. to 6:00 p.m.
- Sunday from 9:00 a.m. to 6:00 p.m.

Speed limit: 50 km/h from 70 km/h

Other information: Access will be maintained in all directions during the activity period

For your safety, please obey all construction signs when travelling through the area. KGL would like to thank you for your patience during this period of construction.



MACLEOD TRAIL

MACLEOD TRAIL

HIGHWAY 22X

HIGHWAY 22X

CLOSED

CLOSED

6 STREET

SHERIFF KING STREET

BOUNDARY OF TRANSPORTATION UTILITY CORRIDOR

- LOCATION OF ACTIVITY
- PREVIOUS TRAFFIC REALIGNMENTS

