

Southwest Calgary Ring Road

Traffic Advisory

April 10, 2019

Haul Crossing on Highway 22X at 24 Street

Location: Westbound Highway 22X at the intersection with 24 Street S.W.

Impacts:

- Haul trucks crossing Highway 22X resulting in periodic stoppages of traffic
- Traffic control personnel directing vehicles

Reason: Moving material for construction of new road in the median of Highway 22X

Start date: Friday, April 12, 2019

Completion date: Friday, August 30, 2019

Work hours: Monday through Saturday from 7:00 a.m. to 6:00 p.m.

Speed reduction: 50 km/h from 70 km/h (when the haul is active)

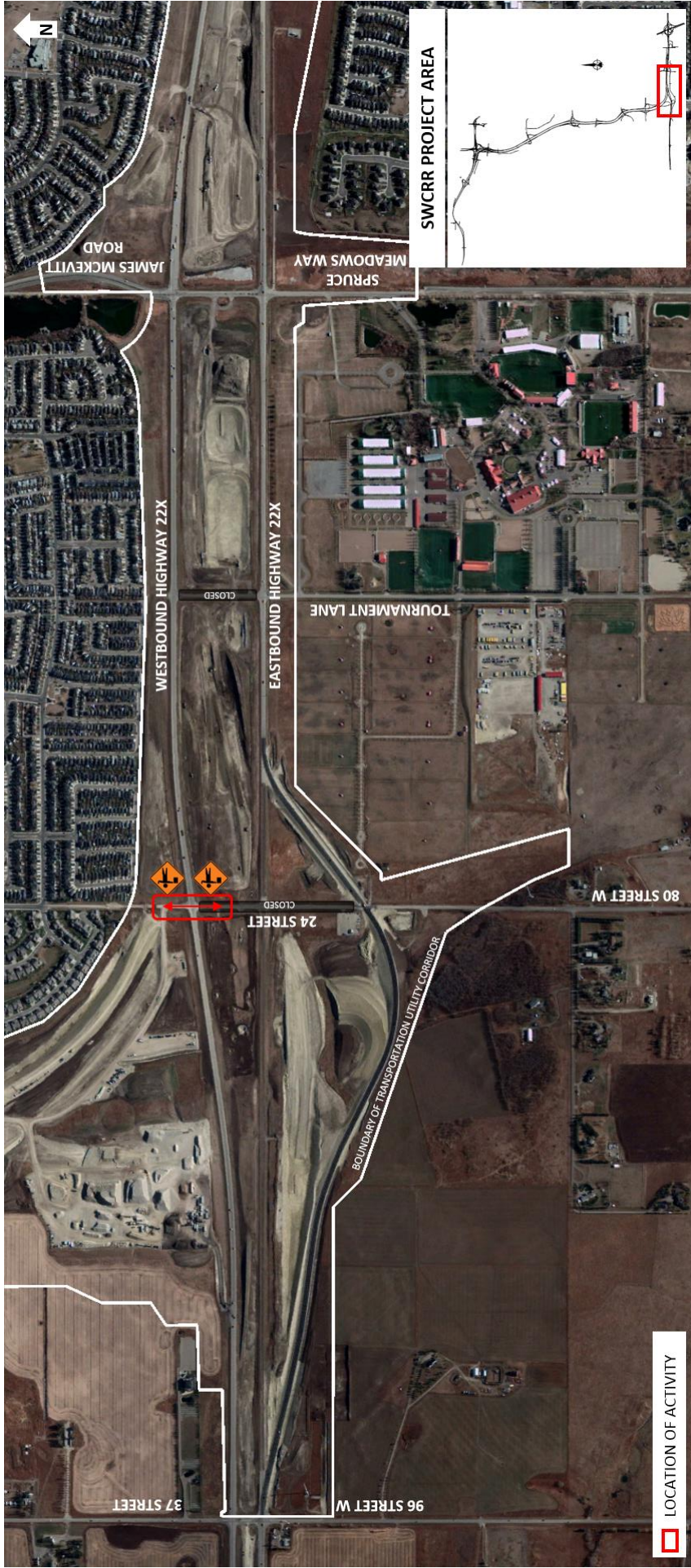
Other information: 24 Street in the median of Highway 22X is [closed](#) to public traffic

For your safety, please obey all construction signs and traffic control personnel when travelling through the area.

KGL would like to thank you for your patience during this period of construction.

403-212-0565
info@SWCRRproject.com
www.SWCRRproject.com





SWCRR PROJECT AREA

LOCATION OF ACTIVITY

N

JAMES MCKEIVITT ROAD

SPRUCE MEADOWS WAY

WESTBOUND HIGHWAY 22X

EASTBOUND HIGHWAY 22X

TOURNAMENT LANE

80 STREET W

24 STREET

CLOSED

96 STREET W

37 STREET

BOUNDARY OF TRANSPORTATION UTILITY CORRIDOR

CLOSED