

Southwest Calgary Ring Road

Traffic Advisory

February 19, 2019

Road and Lane Closures on Macleod Trail at Highway 22X

Location: Macleod Trail S.E. at the interchange with Highway 22X

Dates and Impacts:

- Friday, February 22 at 9:00 p.m. to Saturday, February 23 at 7:00 a.m. (one night shift)
 - Full closure of northbound and southbound Macleod Trail
 - Closure of the ramp from eastbound Highway 22X to northbound Macleod Trail
 - Detour of traffic to nearby interchange ramps
- Saturday, February 23 at 7:00 a.m. to Monday, February 25 at 6:00 a.m. (24-hours a day)
 - Closure of the right southbound lane on Macleod Trail
 - Closure of the left northbound lane on Macleod Trail
 - Resulting in single-lane traffic on both northbound and southbound Macleod Trail

Reason: Completion of bridge demolition and installation of deck panels and overhangs

Speed limit: 50 km/h from 70 km/h

Other information:

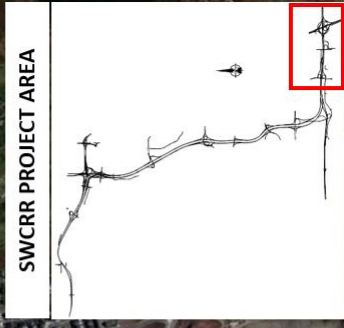
- Severe winter weather during the previous road closure slowed bridge demolition activities
- The closure allows KGL to install panels and overhangs on new bridges, which will reduce future closures
- Work will include night shifts to complete activities in a short window and limit traffic impacts
- Drivers are encouraged to consider alternate routes, including Deerfoot Trail or 37 Street S.W.

For your safety, please obey all construction signs and traffic control personnel when travelling through the area.

KGL would like to thank you for your patience during this period of construction.

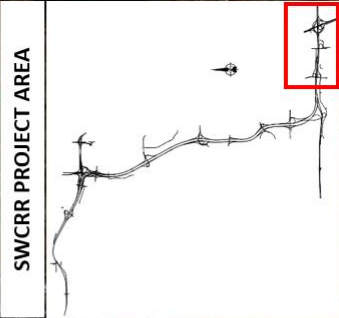
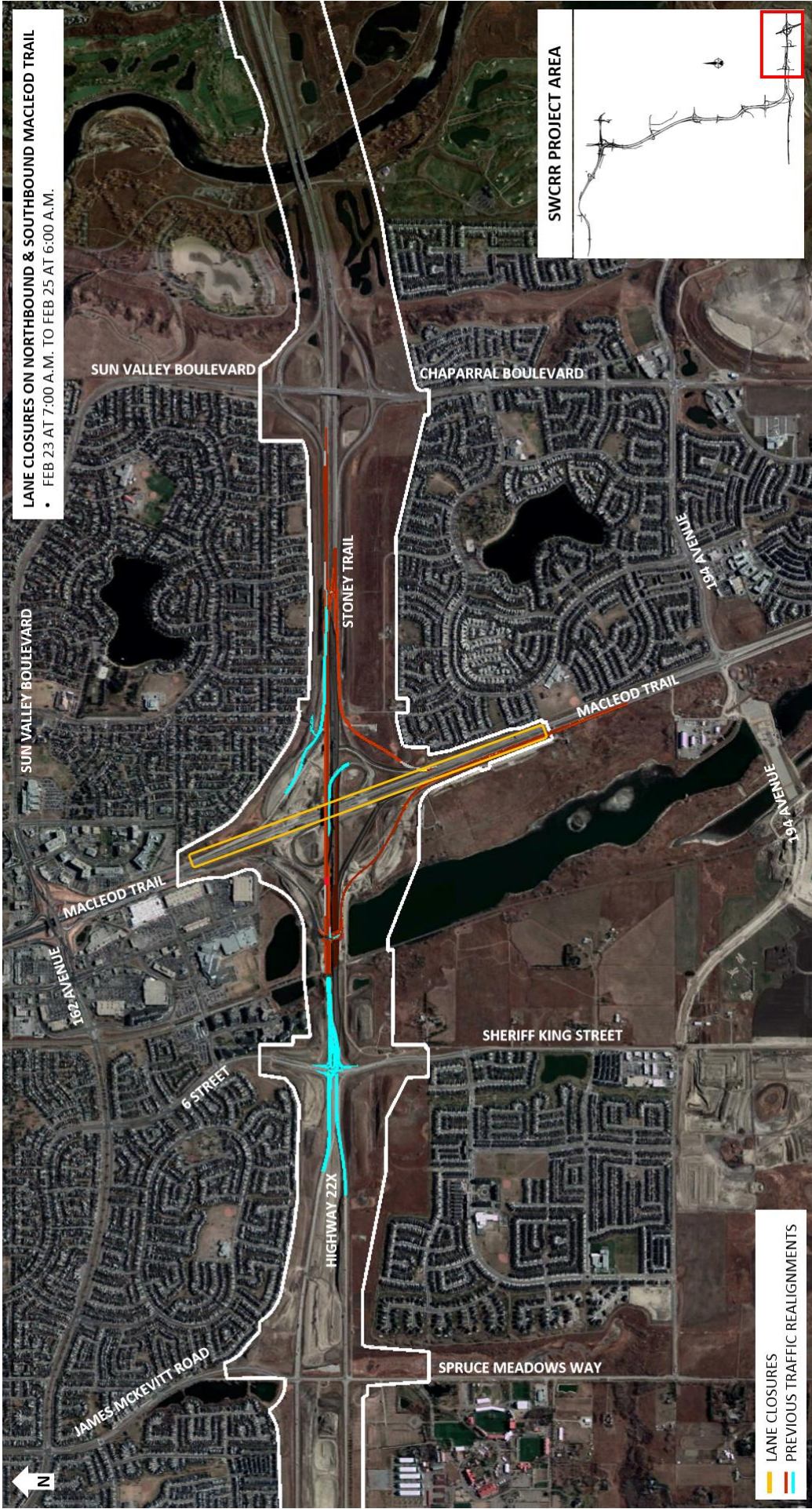


FULL CLOSURE OF MACLEOD TRAIL
 FEB 22 AT 9:00 P.M. TO FEB 23 AT 7:00 A.M.



- █ ROAD CLOSURES
- █ DETOUR ROUTES
- █ PREVIOUS TRAFFIC REALIGNMENTS

LANE CLOSURES ON NORTHBOUND & SOUTHBOUND MACLEOD TRAIL
• FEB 23 AT 7:00 A.M. TO FEB 25 AT 6:00 A.M.



LANE CLOSURES
PREVIOUS TRAFFIC REALIGNMENTS

