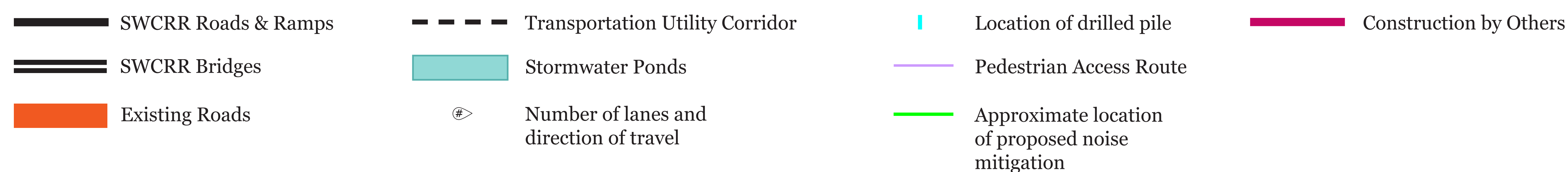
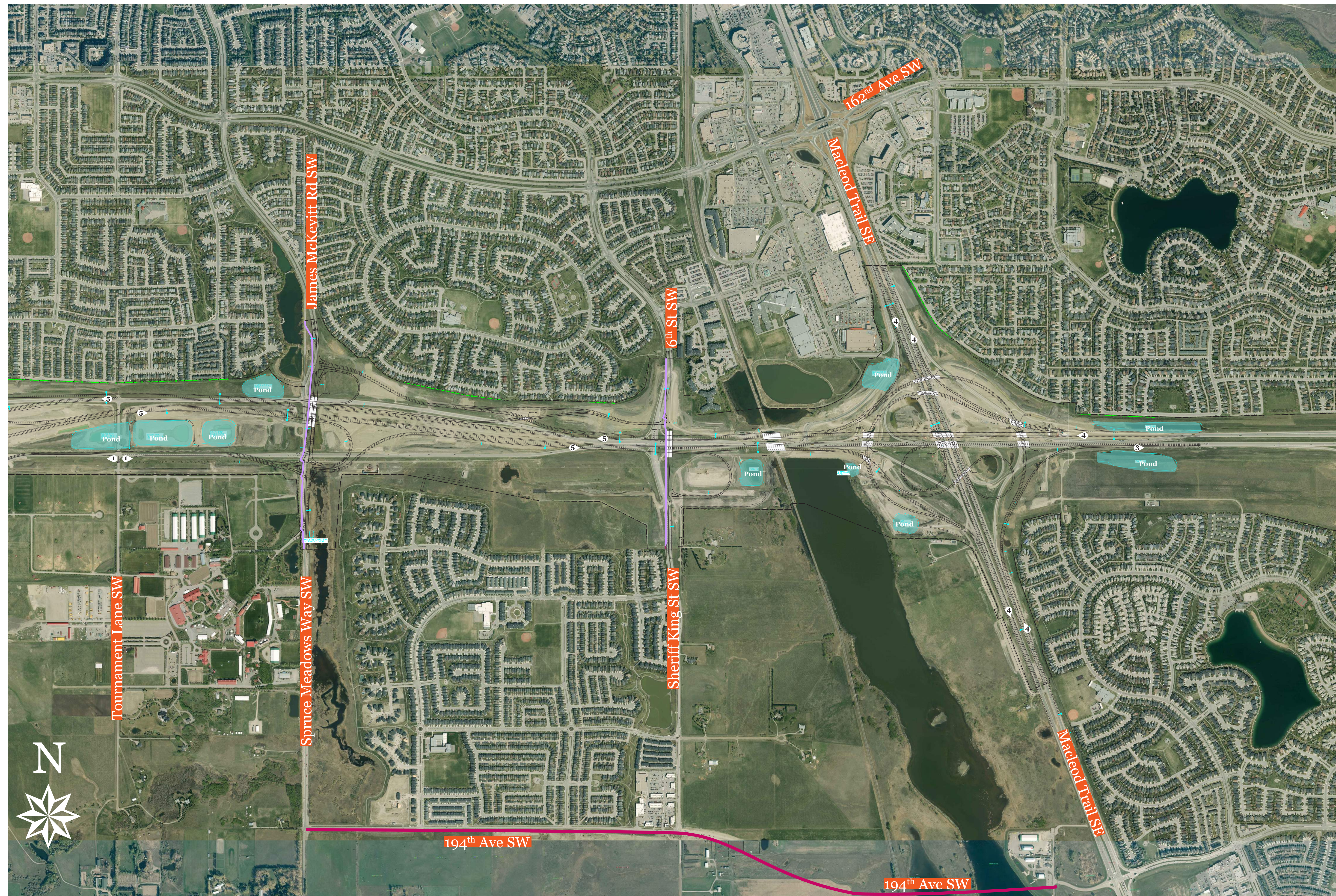


Southwest Calgary Ring Road

2019 Construction Update Segment 6: Highway 22X from James McKevitt Road / Spruce Meadows Way to Macleod Trail SE



Project Corridor

- Realign traffic on Highway 22X onto new road in summer
 - » Multiple realignments of eastbound and westbound traffic
- Haul truck and equipment traffic on Highway 22X
- Speed reductions on Highway 22X and Macleod Trail

James McKevitt Road / Spruce Meadows Way

- Realign traffic at James McKevitt Road in spring
- Additional piling at James McKevitt Road in spring

6th Street / Sheriff King Street

- Temporary road closures on Sheriff King Street in spring
- Additional piling at 6th Street in summer
- Realign traffic on 6th Street and Sheriff King Street in summer

Macleod Trail

- Ongoing piling for new bridges at Macleod Trail
- Temporary road closures and detours on Macleod Trail to facilitate girder installations
- Traffic realignments on Macleod Trail in summer
 - » Pattern changes for northbound and southbound traffic
- Realign traffic from eastbound Highway 22X to northbound Macleod Trail in summer
 - » Around new ramp
- Realign traffic from westbound Highway 22X to northbound Macleod Trail in fall
 - » Across new bridge

For discussion purposes only – subject to change

Questions? Contact us:

24/7 phone: 403-212-0565

info@SWCRRproject.com

SWCRRproject.com

