

Southwest Calgary Ring Road

Traffic Advisory

April 20, 2018

Lane Closure on Southbound Macleod Trail at Highway 22X

Location: Southbound Macleod Trail S.E. at the Highway 22X bridges

Impact: Temporary closure of the left southbound lane for approximately 300 metres

Reason: Bridge construction (pouring of concrete columns)

Start date: Friday, April 20 2018

Completion date: Friday, April 20, 2018

Work hours: 9:00 a.m. to 3:00 p.m.

Speed reduction: 50 km/hr from 70 km/hr

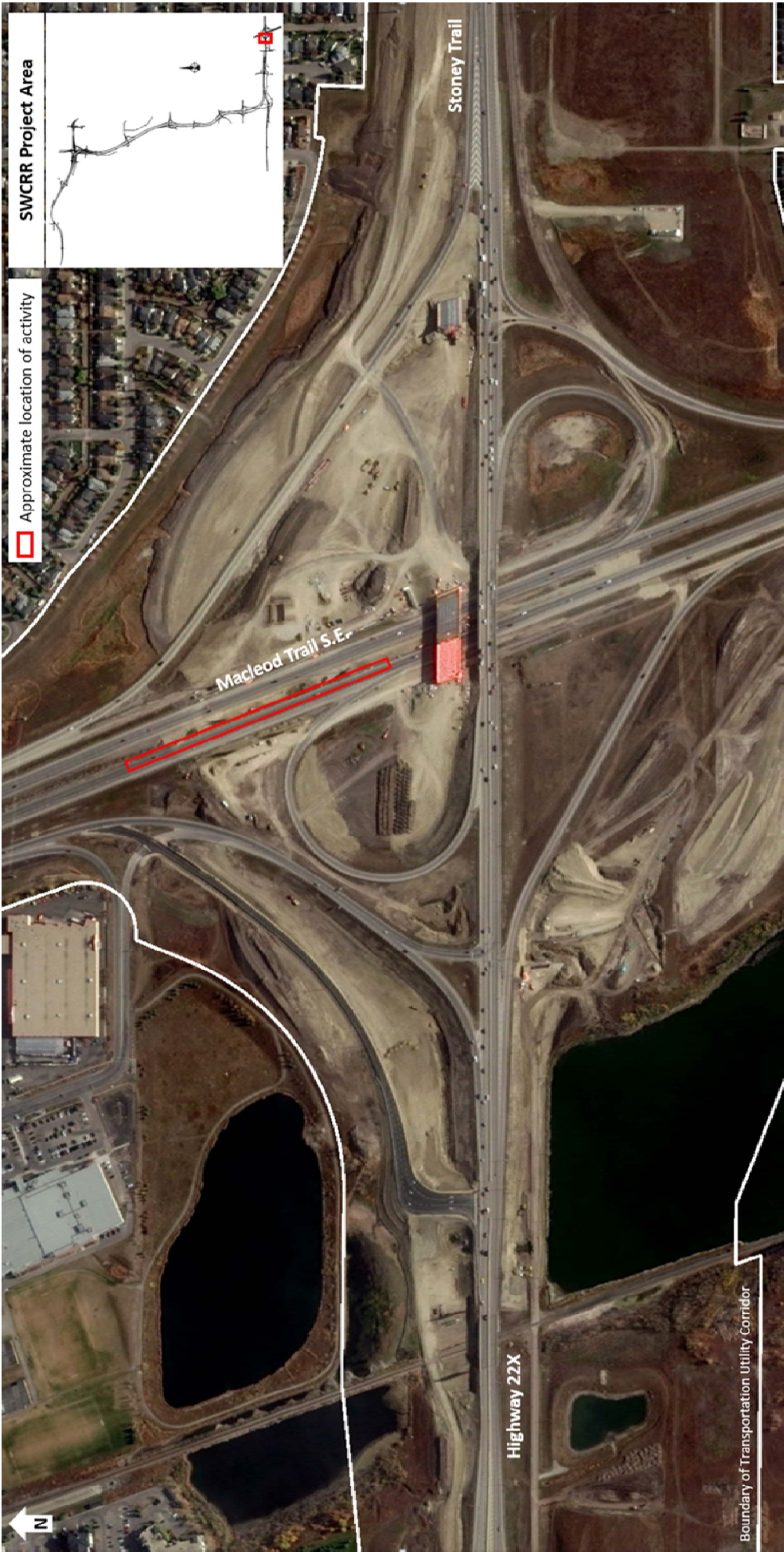
Other information: N/A

For your safety, please obey all construction signs and traffic control personnel when travelling through the area.

KGL would like to thank you for your cooperation during this period of construction.

403-212-0565
info@SWCRRproject.com
www.SWCRRproject.com





SWCRR Project Area

Approximate location of activity

Macleod Trail S.E.

Stoney Trail

Highway 22X

Boundary of Transportation Utility Corridor

