

# Southwest Calgary Ring Road

## Traffic Advisory

October 18, 2017

---

### Lane Closure on Westbound Highway 22X at Sheriff King Street

**Location:** The dual turn lane from westbound Highway 22X to southbound Sheriff King Street S.W.

**Impact:** Closure of the left lane of the dual turn

**Reason:** Geotechnical borehole drilling

**Start date:** Friday, October 20, 2017

**Completion date:** Saturday, October 21, 2017

**Work hours:**

- October 20 – 9:00 a.m. to 3:00 p.m.
- October 21 – 7:00 a.m. to 5:00 p.m.

**Speed reduction:** 50 km/hr from 70 km/hr

**Other information:** The other lane of the dual turn from westbound Highway 22X to southbound Sheriff King will remain open

For your safety, please obey all construction signs and traffic control personnel when travelling through the area.

KGL would like to thank you for your cooperation during this period of construction.

403-212-0565  
info@SWCRRproject.com  
www.SWCRRproject.com





SWCRR Project Area

Approximate location of activity

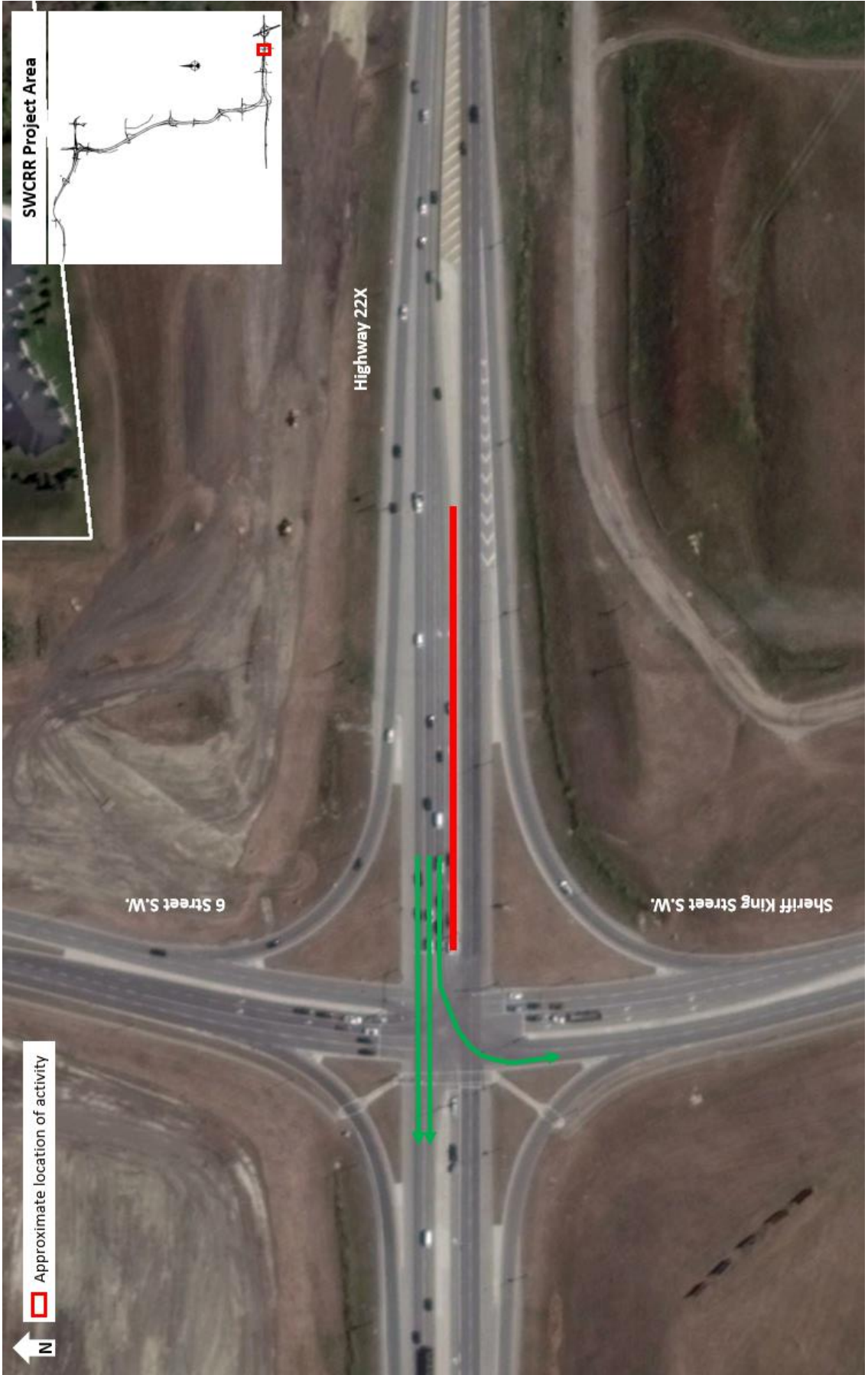
N

Boundary of Transportation Utility Corridor

Highway 22X

6 Street S.W.

Sheriff King Street S.W.



Approximate location of activity



Highway 22X

6 Street S.W.

Sheriff King Street S.W.