

Southwest Calgary Ring Road

Traffic Advisory

December 5, 2018

Lane Closure on ramp from Highway 22X to Macleod Trail

Location: Ramp from eastbound Highway 22X to northbound Macleod Trail S.E.

Impacts:

- Temporary closure of a portion of the merge lane onto northbound Macleod Trail
- Change from a merge to a yield condition

Reason: Removing framework from bridge

Work date: Monday, December 10, 2018

Work hours: 9:00 a.m. to 3:30 p.m.

Speed limit: N/A

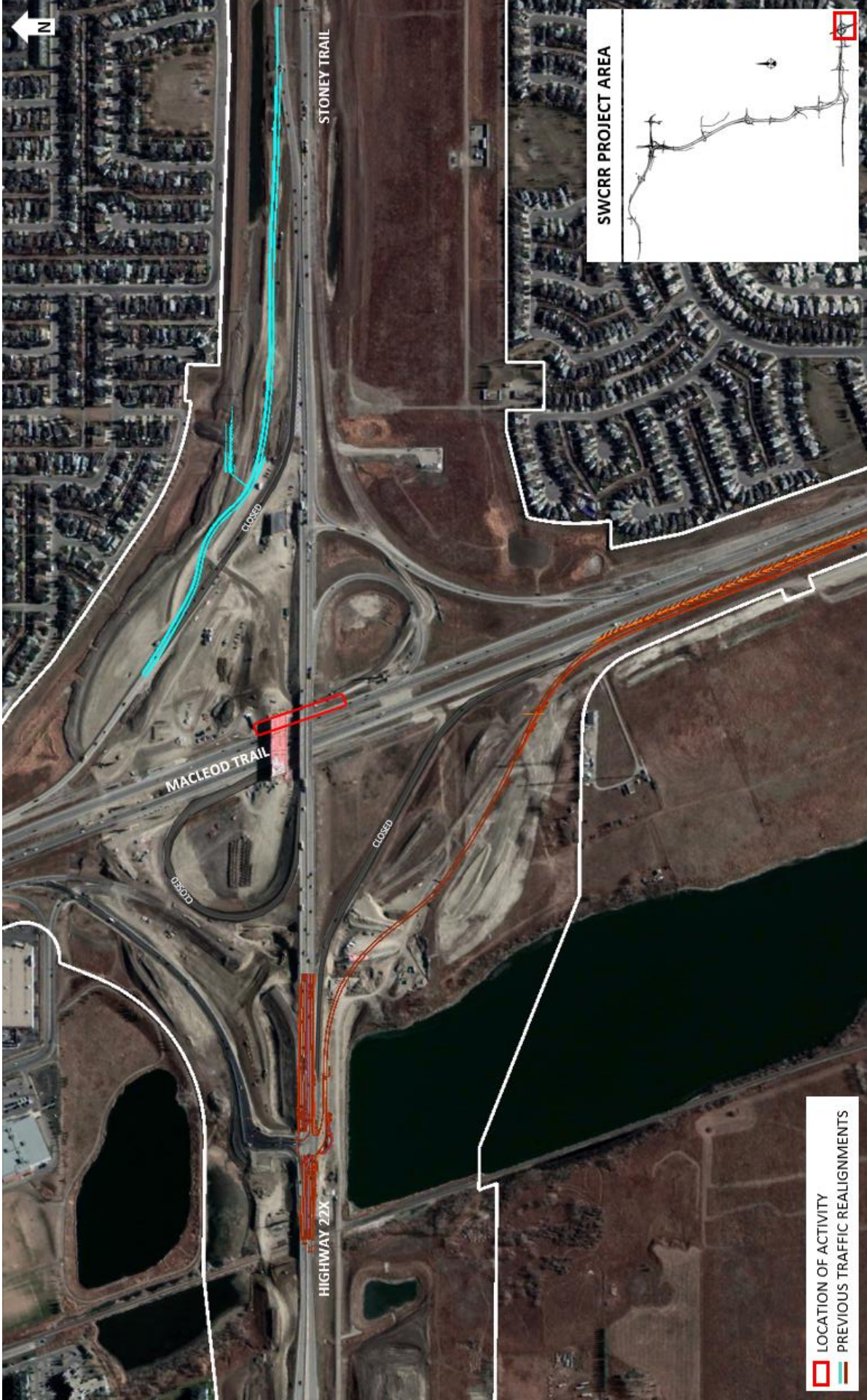
Other information: N/A

For your safety, please obey all construction signs and traffic control personnel when travelling through the area.

KGL would like to thank you for your patience during this period of construction.

403-212-0565
info@SWCRRproject.com
www.SWCRRproject.com





N

STONEY TRAIL

MACLEOD TRAIL

HIGHWAY 22X

CLOSED

CLOSED

CLOSED

SWCRR PROJECT AREA

LOCATION OF ACTIVITY
PREVIOUS TRAFFIC REALIGNMENTS