

Southwest Calgary Ring Road

Traffic Advisory

July 11, 2018

Haul Crossing on Macleod Trail Ramp to Highway 22X

Location: Northwest portion of the interchange at Macleod Trail S.E. and Highway 22X

Impact: Traffic control personnel on the ramp from southbound Macleod Trail to Highway 22X

Reason: Construction haul trucks crossing ramps

Start date: Monday, May 28, 2018

Completion date: September 2018

Work hours: 7:00 a.m. to 6:00 p.m.

Speed reduction: 50 km/hr from 50 km/hr

Other information: N/A

For your safety, please obey all construction signs and traffic control personnel when travelling through the area.

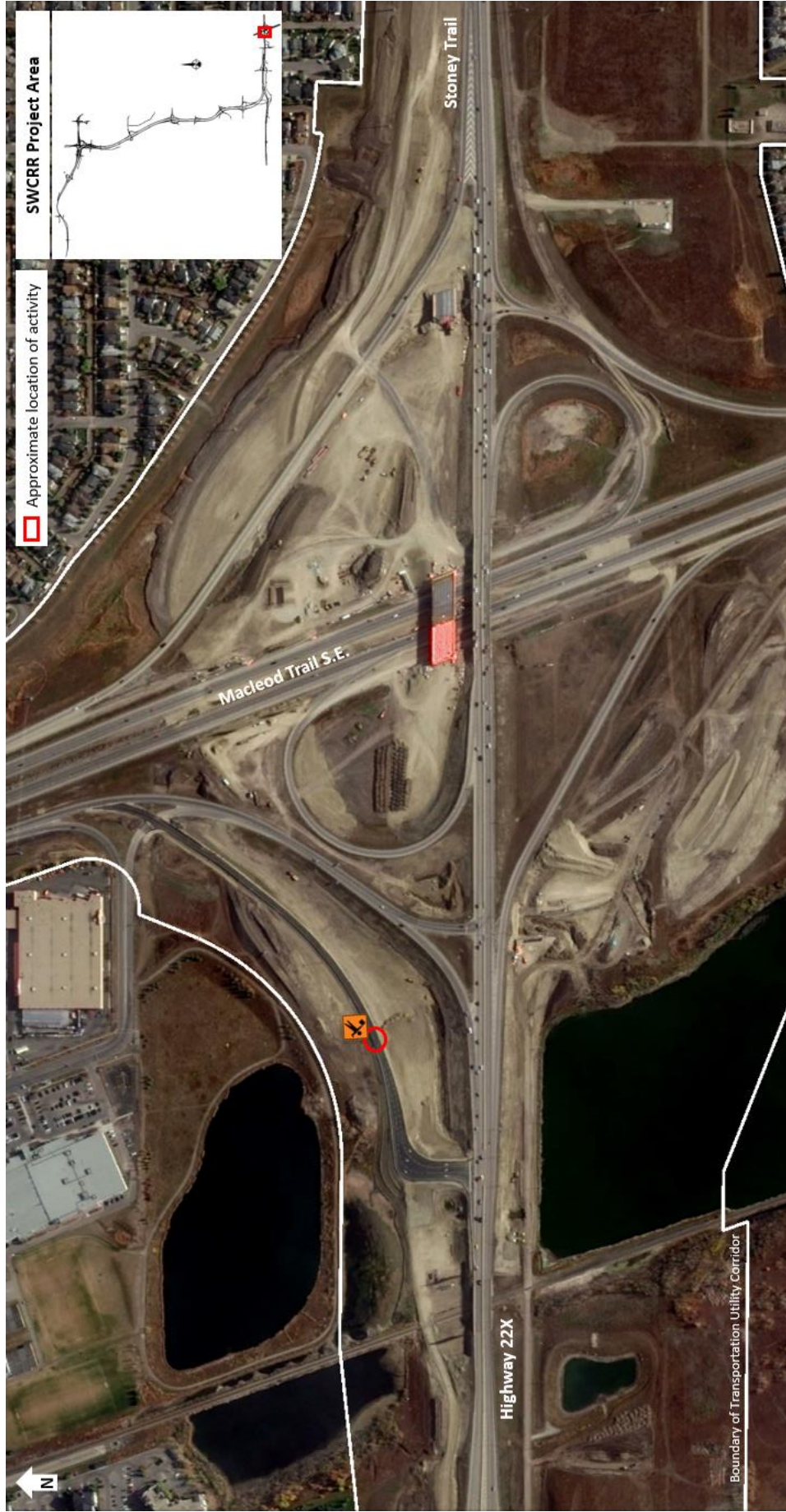
KGL would like to thank you for your patience during this period of construction.

403-212-0565
info@SWCRRproject.com
www.SWCRRproject.com

 Alberta
Government

 MOUNTAIN VIEW
PARTNERS

 KGL
CONSTRUCTORS



Approximate location of activity

SWCRR Project Area

Stoney Trail

Macleod Trail S.E.

Highway 22X

Boundary of Transportation Utility Corridor

N