

# Southwest Calgary Ring Road

## Traffic Advisory

July 5, 2017

---

### Haul Trucks Crossing Macleod Trail Ramps

**Location:** Northwest portion of the Macleod Trail S.E. and Highway 22X interchange

**Impacts:**

- Traffic signals on loop ramp from westbound Highway 22X to southbound Macleod Trail
- Trucks entering ramp from southbound Macleod Trail to westbound/eastbound Highway 22X

**Reason:** Construction haul trucks crossing ramps

**Start date:** July 10, 2017, at 10:00 a.m.

**Completion date:** September 10, 2017, at 5:00 p.m.

**Speed reduction:** N/A

**Other information:** The traffic signals will only be active during the project hours of Monday to Saturday from 7:00 a.m. to 10:00 p.m. and Sundays and holidays from 9:00 a.m. to 10:00 p.m.

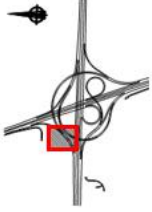
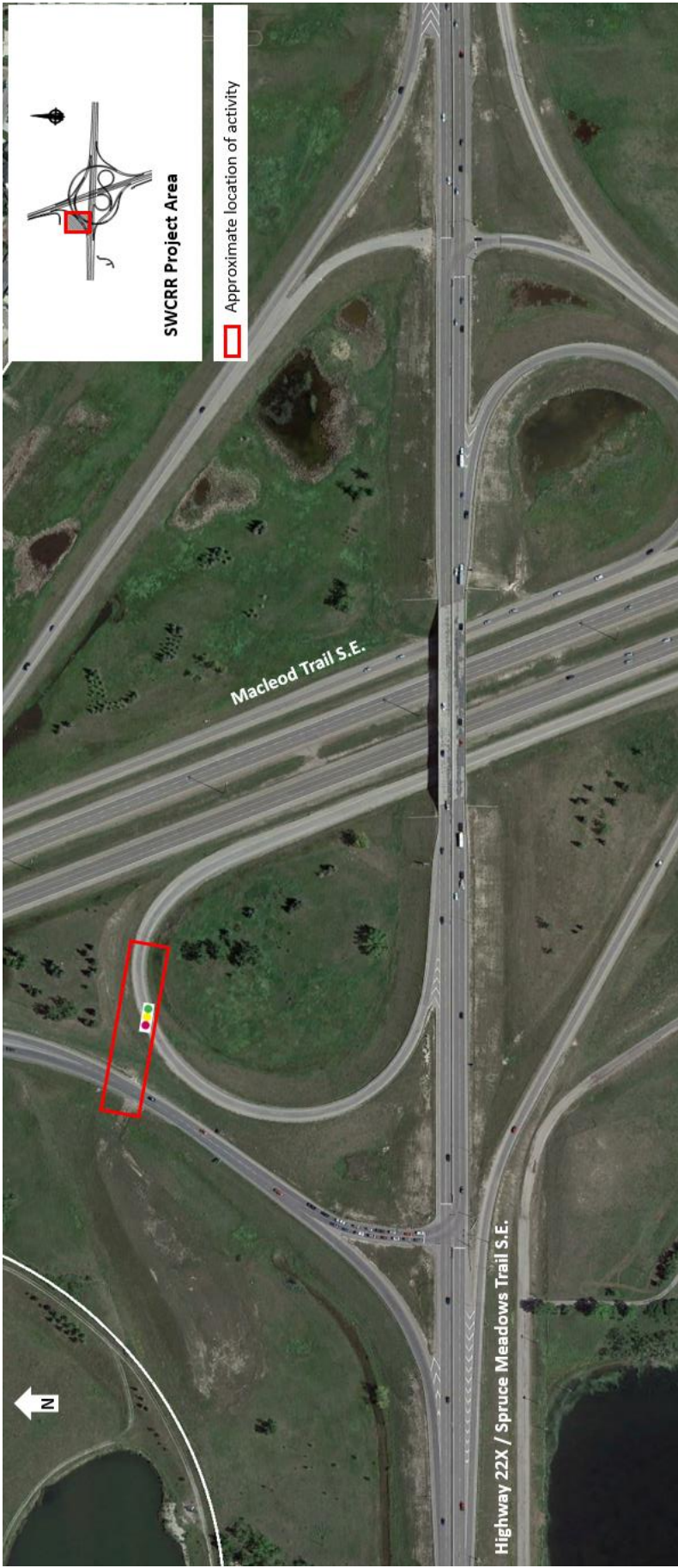
For your safety, please obey all construction signs and traffic control personnel when travelling through the area.

KGL would like to thank you for your cooperation during this period of construction.

**If you have any questions or would like to sign up for SWCRR updates, please contact our  
24/7 phone: 403-212-0565**

info@SWCRRproject.com  
www.SWCRRproject.com





**SWCRR Project Area**

 Approximate location of activity

Macleod Trail S.E.

Highway 22X / Spruce Meadows Trail S.E.

N