

# Southwest Calgary Ring Road

## Traffic Advisory

October 6, 2017

---

### Shoulder Closure on Macleod Trail Ramp to Highway 22X

**Location:** The ramp from southbound Macleod Trail S.E. to Highway 22X (at the exit to Shawville Boulevard)

**Impacts:** Closure of the right shoulder for approximately 150 metres

**Reason:** Detour construction

**Start date:** October 10, 2017

**Completion date:** October 10, 2017

**Work hours:** 7:00 a.m. to 5:00 p.m.

**Speed reduction:** 50 km/hr from 50 km/hr

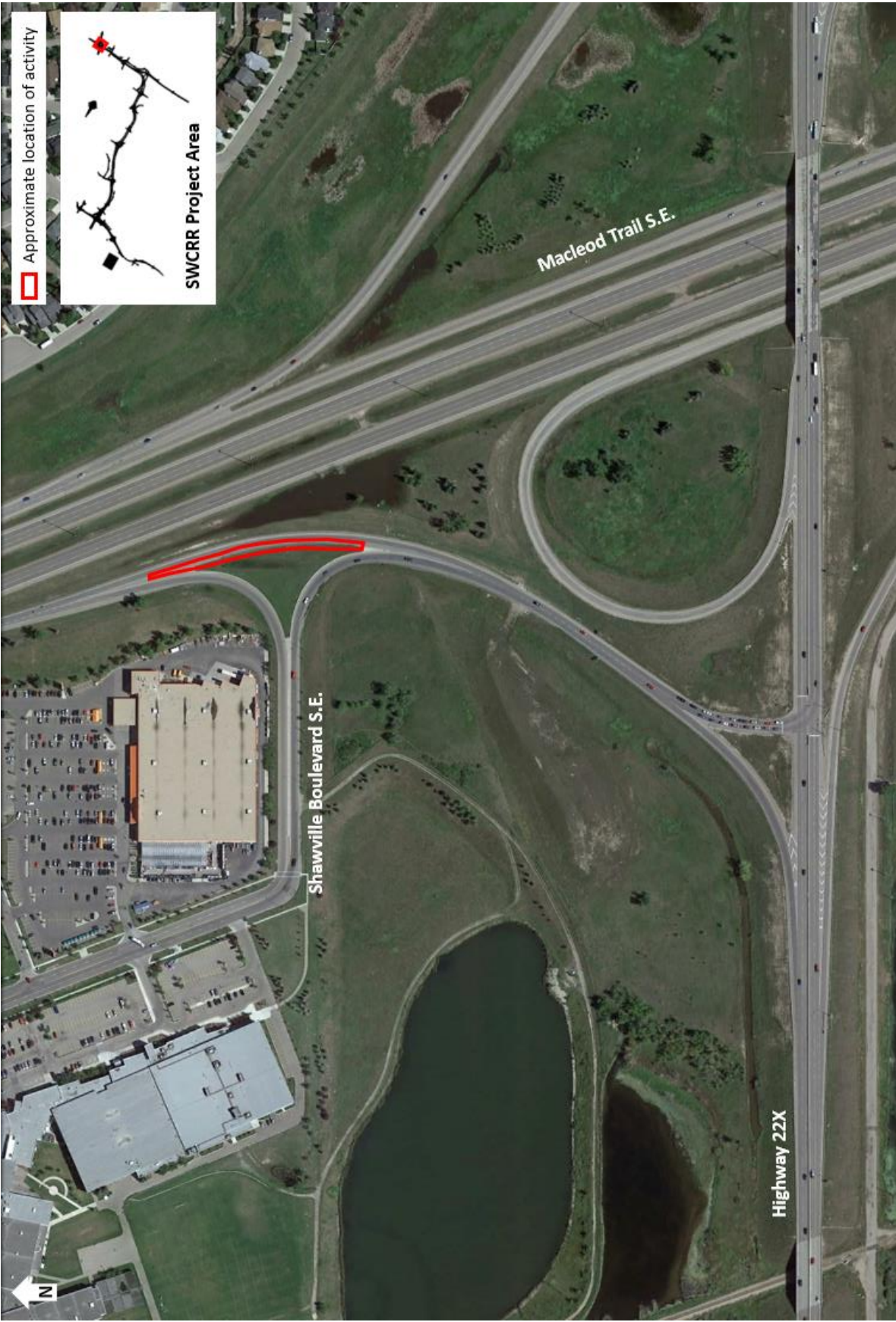
**Other information:** N/A

For your safety, please obey all construction signs and traffic control personnel when travelling through the area.

KGL would like to thank you for your cooperation during this period of construction.

403-212-0565  
info@SWCRRproject.com  
www.SWCRRproject.com





Approximate location of activity



SWCRR Project Area

Macleod Trail S.E.

Shawville Boulevard S.E.

Highway 22X

