

# Southwest Calgary Ring Road

## Traffic Advisory

October 11, 2017

---

### Traffic Realignment on Southbound Macleod Trail to Highway 22X

**Location:** Ramp from southbound Macleod Trail S.E. to Highway 22X

**Impact:** Realignment of traffic onto a new ramp constructed west of the current intersection

**Reason:** Detour around road construction

**Implementation date:** Evening of Friday, October 13, 2017

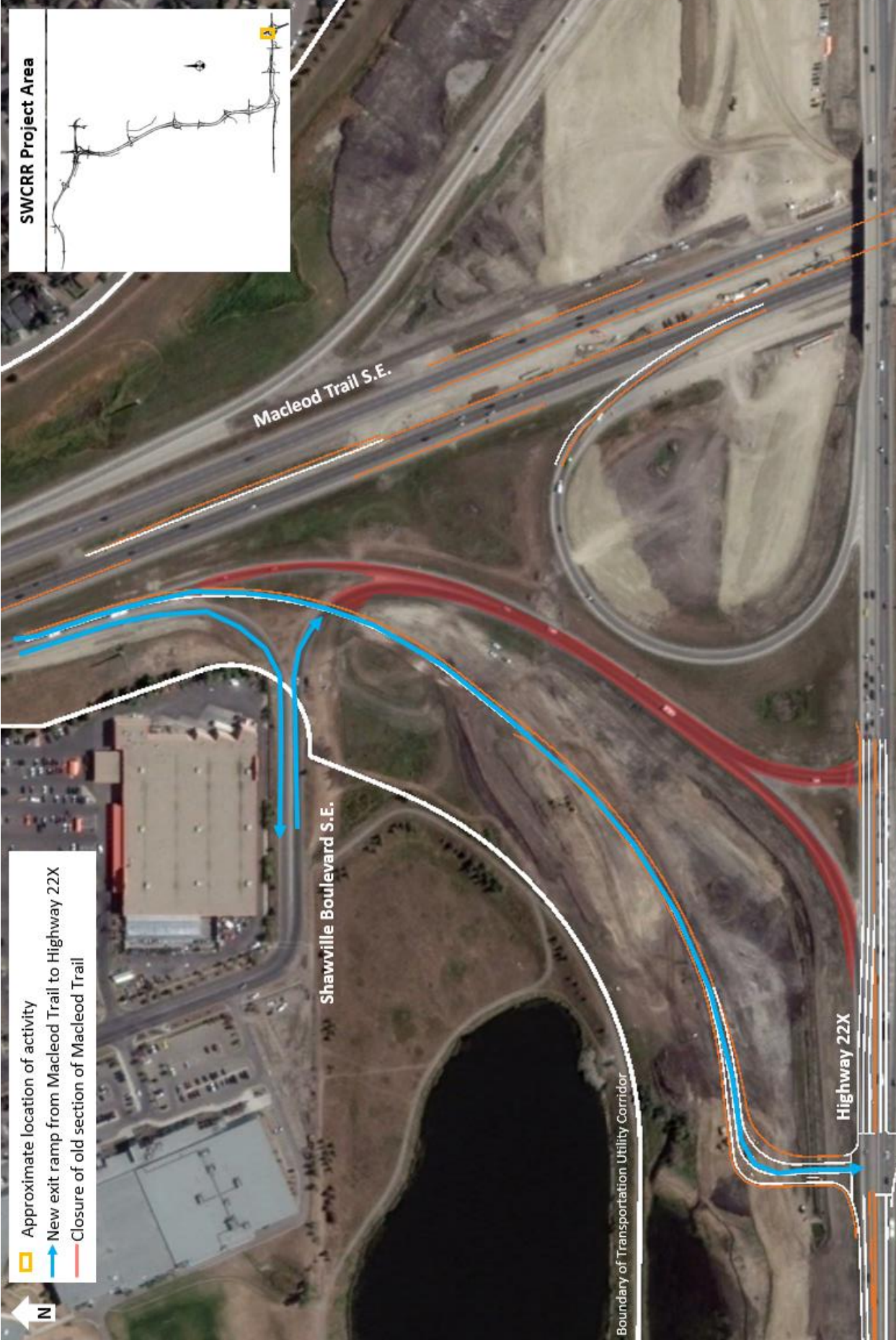
**Speed reduction:** N/A

**Other information:**

- Traffic signals will be installed where the new ramp meets Highway 22X
- The traffic signals at the existing intersection will be decommissioned
- The timing of the traffic signals at the new intersection will be adjusted to improve traffic flow through the area
- Access to and from Shawville Boulevard will be maintained until later in the construction period

For your safety, please obey all construction signs and traffic control personnel when travelling through the area.

KGL would like to thank you for your cooperation during this period of construction.



- Approximate location of activity
- New exit ramp from Macleod Trail to Highway 22X
- Closure of old section of Macleod Trail

