

Southwest Calgary Ring Road

Traffic Advisory

October 4, 2017

Traffic Realignments on Lott Creek Boulevard

Location: Lott Creek Boulevard S.W., directly south of the intersection with Highway 8

Impact: Realignments of northbound and southbound traffic around open excavations in road

Reason: Utility installation

Start date: Thursday, October 5, 2017

Completion date: Friday, October 6, 2017

Work hours: 7:00 a.m. to 7:00 p.m. on both days

Speed reduction: N/A

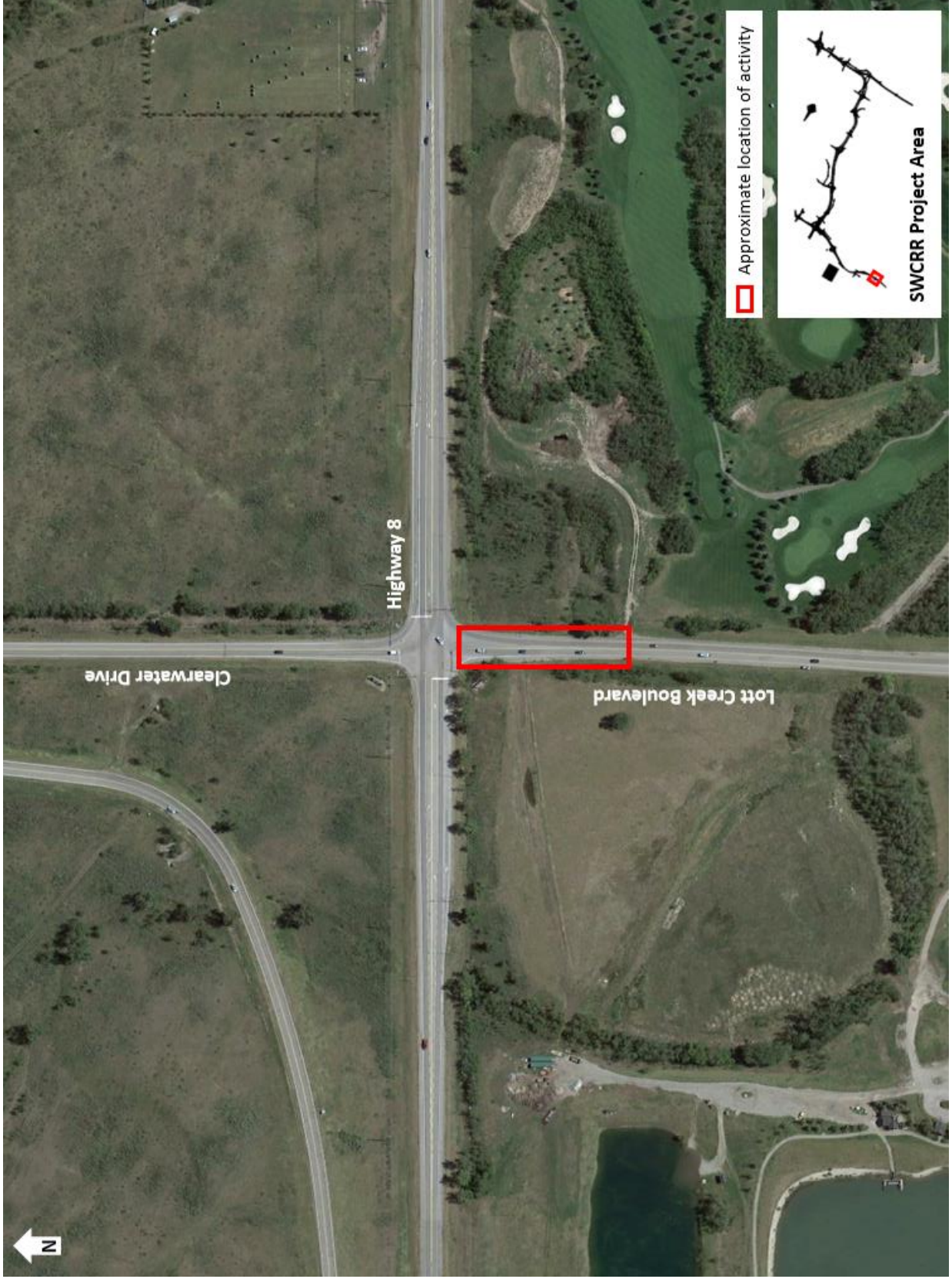
Other information: N/A

For your safety, please obey all construction signs and traffic control personnel when travelling through the area.

KGL would like to thank you for your cooperation during this period of construction.

403-212-0565
info@SWCRRproject.com
www.SWCRRproject.com





Approximate location of activity



SWCRR Project Area