

# Southwest Calgary Ring Road

## Traffic Advisory

September 27, 2017

---

### Lane Closure on Eastbound Highway 22X

**Location:** Eastbound Highway 22X (Spruce Meadows Trail) about 400 metres east of Sheriff King Street/6 Street S.E.

**Impact:** Closure of the eastbound right lane for approximately 300 metres

**Reason:** Installation of traffic signal poles

**Start date:** September 29, 2017

**Completion date:** September 29, 2017

**Work hours:** 9:00 a.m. to 3:00 p.m.

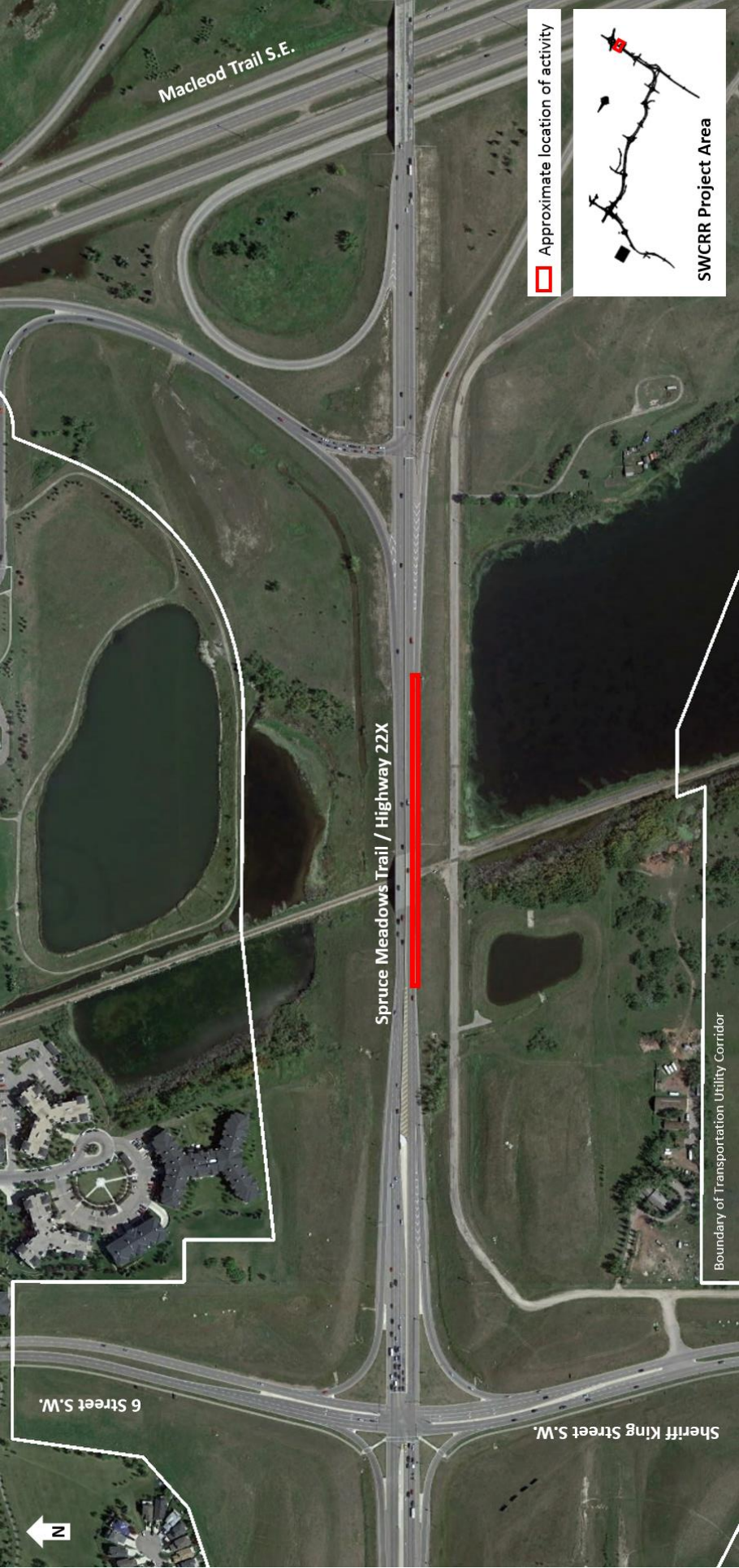
**Speed reduction:** 70 km/hr from 70 km/hr

For your safety, please obey all construction signs and traffic control personnel when travelling through the area.

KGL would like to thank you for your cooperation during this period of construction.

403-212-0565  
info@SWCRRproject.com  
www.SWCRRproject.com





Approximate location of activity



SWCRR Project Area

Boundary of Transportation Utility Corridor

