

Southwest Calgary Ring Road

Traffic Advisory

July 11, 2018

Haul Crossing on Highway 22X Ramp to Macleod Trail

Location: Exit ramp from westbound Highway 22X (Stoney Trail) to northbound Macleod Trail S.E.

Impact: Haul trucks crossing the ramp resulting in periodic stoppages of traffic

Reason: Earthworks for bridge structures

Start date: Monday, June 4, 2018

Completion date: September 2018

Work hours: 7:00 a.m. to 6:00 p.m.

Speed reduction: 60 km/hr from 60 km/hr

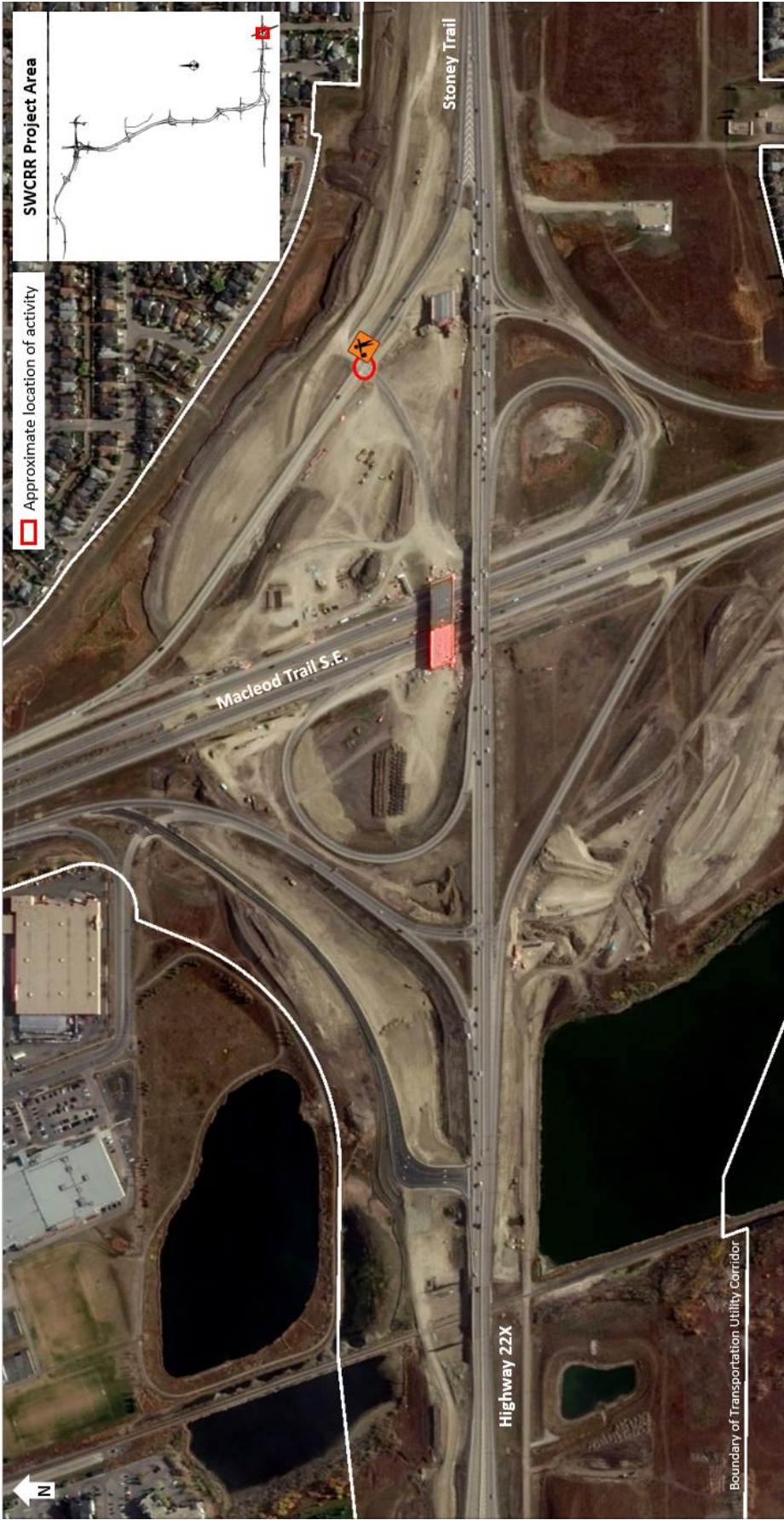
Other information: Traffic control personnel will be on site to direct vehicles

For your safety, please obey all construction signs and traffic control personnel when travelling through the area.

KGL would like to thank you for your cooperation during this period of construction.

403-212-0565
info@SWCRRproject.com
www.SWCRRproject.com





SWCRR Project Area

Approximate location of activity

Macleod Trail S.E.

Stoney Trail

Highway 22X

Boundary of Transportation Utility Corridor

N