

# Southwest Calgary Ring Road

## Traffic Advisory

October 29, 2018

---

### Haul Crossing on Highway 22X Ramp to Macleod Trail

**Location:** The exit ramp from westbound Highway 22X to southbound Macleod Trail S.E.

**Impact:** Haul trucks crossing the ramp resulting in periodic stoppages of traffic

**Reason:** Earthworks for bridge structures

**Start date:** Monday, July 16, 2018

**Completion date:** Friday, November 30, 2018

**Work hours:** 7:00 a.m. to 6:00 p.m.

**Speed reduction:** N/A

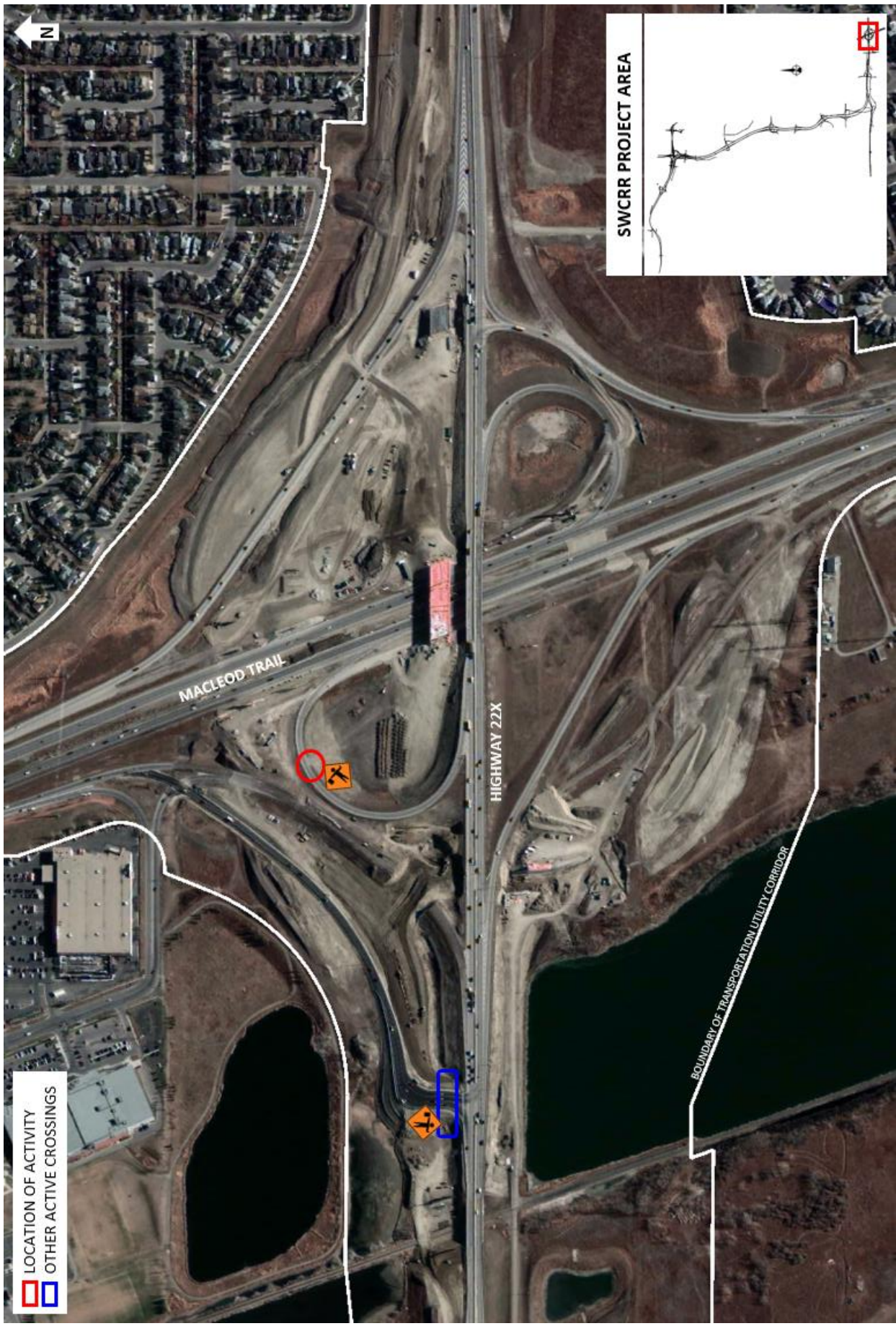
**Other information:** Traffic control personnel will be on site to direct vehicles

For your safety, please obey all construction signs and traffic control personnel when travelling through the area.

KGL would like to thank you for your patience during this period of construction.

403-212-0565  
info@SWCRRproject.com  
www.SWCRRproject.com





LOCATION OF ACTIVITY  
OTHER ACTIVE CROSSINGS

SWCRR PROJECT AREA

MACLEOD TRAIL

HIGHWAY 22X

BOUNDARY OF TRANSPORTATION UTILITY CORRIDOR

N