

Southwest Calgary Ring Road

Traffic Advisory

December 13, 2018

Lane Closure on ramp from Highway 22X to 6 Street

Location: The exit ramp from westbound Highway 22X to northbound 6 Street S.W.

Impact: Partial closure of exit lane and brief stoppages of traffic

Reason: Paving detour connection

Start date: Monday, December 17, 2018

Completion date: Tuesday, December 18, 2018

Work hours: 9:00 a.m. to 3:30 p.m. on both days

Speed limit: 50 km/h from 70 km/h

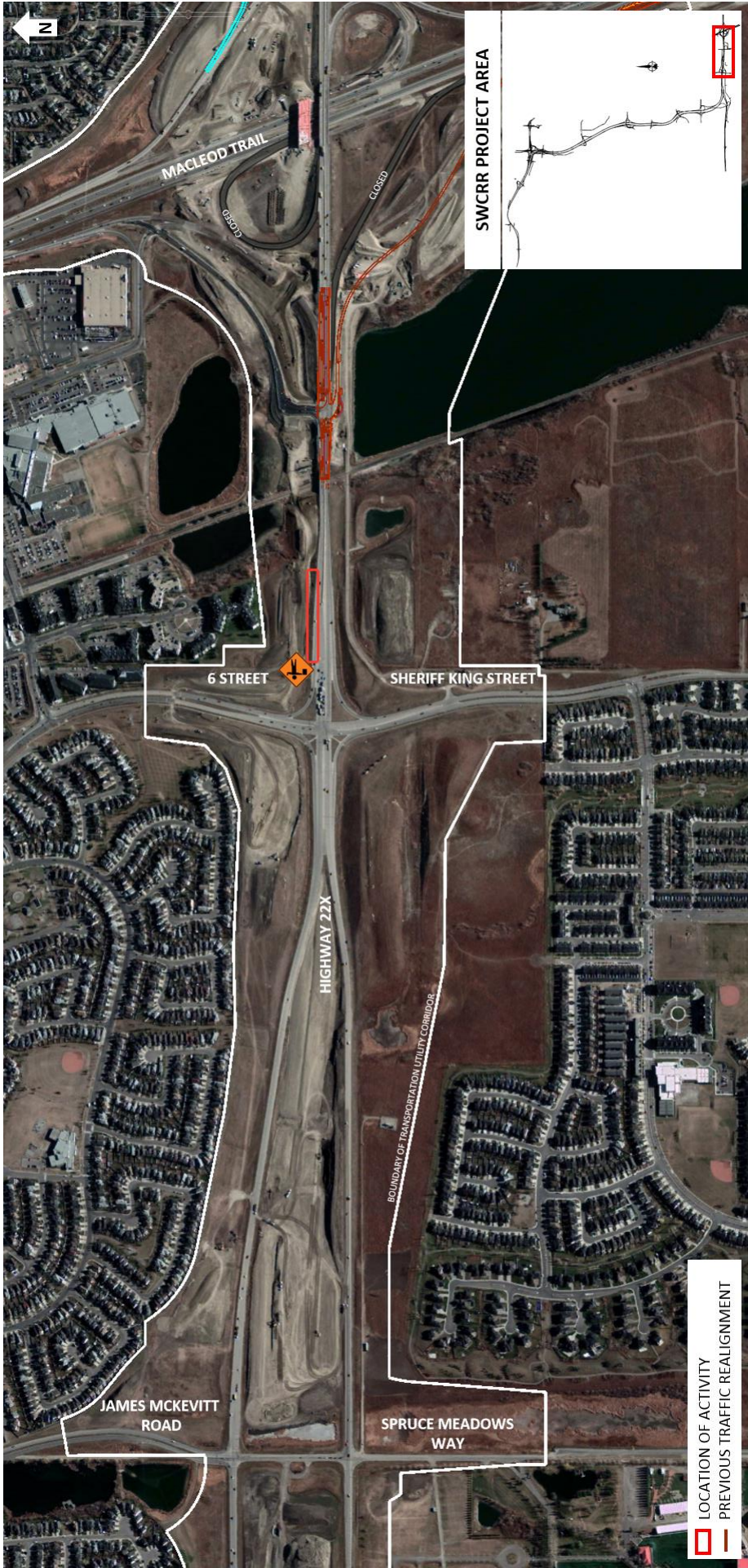
Other information: Traffic control personnel will be on site to direct vehicles

For your safety, please obey all construction signs and traffic control personnel when travelling through the area.

KGL would like to thank you for your patience during this period of construction.

403-212-0565
info@SWCRRproject.com
www.SWCRRproject.com





SWCRR PROJECT AREA

LOCATION OF ACTIVITY
 PREVIOUS TRAFFIC REALIGNMENT



MACLEOD TRAIL

CLOSED

6 STREET

SHERIFF KING STREET

HIGHWAY 22X

JAMES MCKEVITT ROAD

SPRUCE MEADOWS WAY

BOUNDARY OF TRANSPORTATION UTILITY CORRIDOR