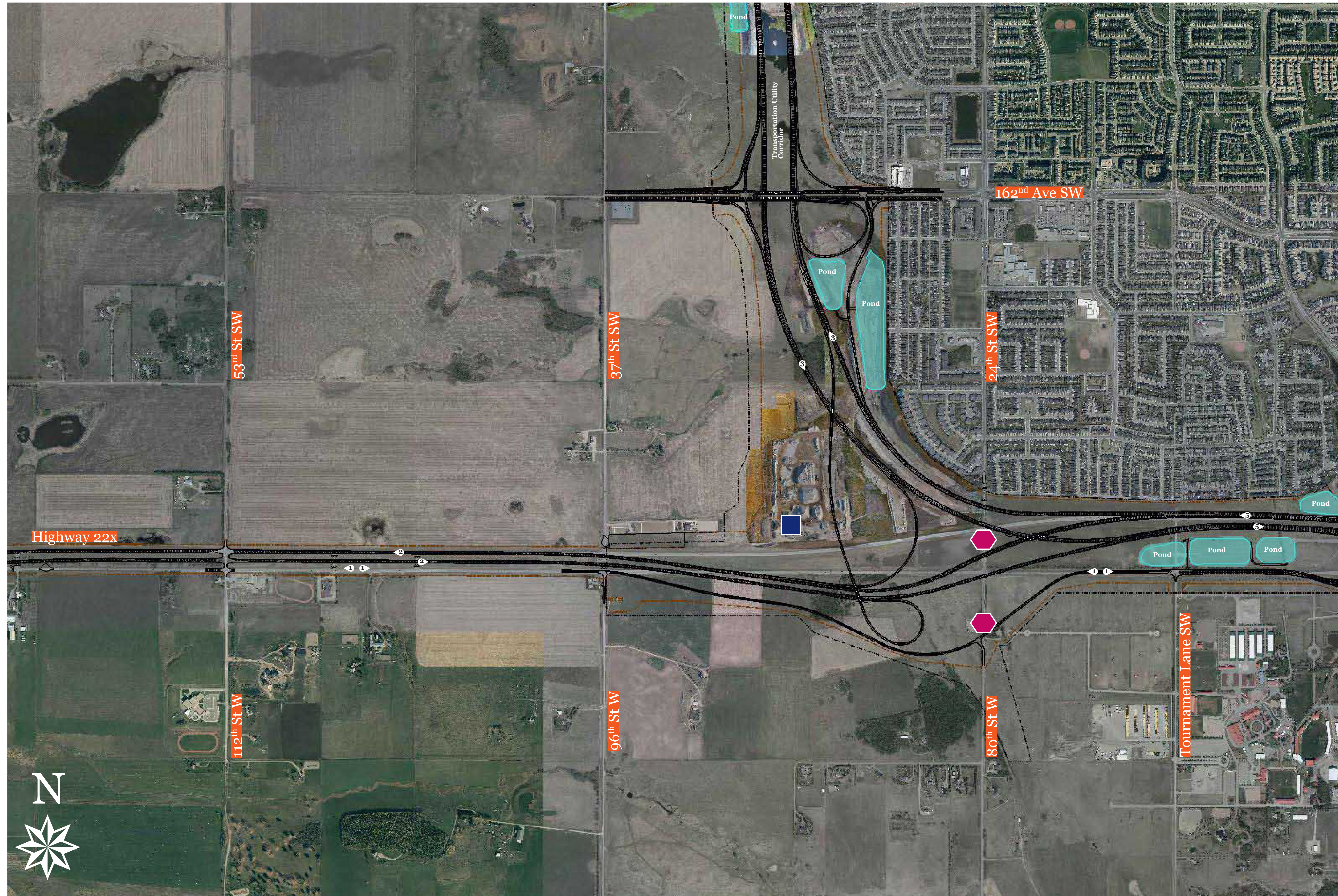


Southwest Calgary Ring Road

2018 Construction Update Segment 5: 162nd Avenue SW to Highway 22X



Road Construction

- Northbound and southbound mainline
- Complete new eastbound lanes in the median of Highway 22X
- New westbound lanes in the median of Highway 22X
- Start upgrade of existing westbound lanes
- Coordinate with the City of Calgary on the extension of 162nd Avenue

Bridge Construction

- Continue bridge at 162nd Avenue
- Start four bridges around Highway 22X
- Driving piling for bridge south of Bridlewood in summer

Traffic Impacts

- Traffic realignments on Highway 22X
- Speed reduction on Highway 22X
- Haul truck traffic on Highway 22X
- Permanently close 24th Street in the median of Highway 22X

- | | | |
|---------------------|---------------------------------|---|
| SWCRR Roads & Ramps | Transportation Utility Corridor | Road Closure |
| SWCRR Bridges | Stormwater Ponds | Asphalt Plant |
| Right-of-Way | Existing Roads | Number of lanes and direction of travel |

For discussion purposes only - subject to change

Questions? Contact us:

24/7 phone: 403-212-0565

info@SWCRRproject.com

SWCRRproject.com

