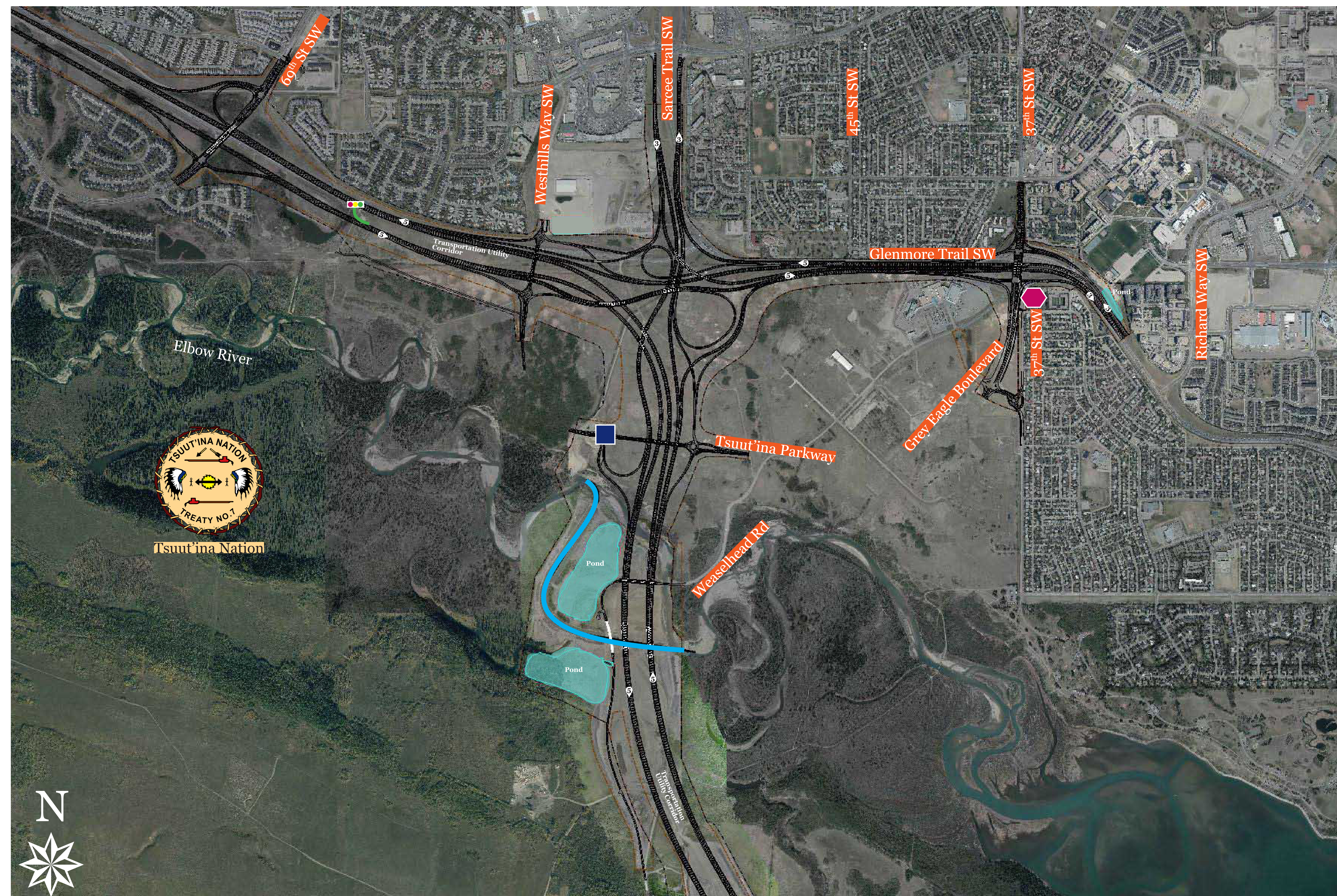


Southwest Calgary Ring Road

2018 Construction Update Segment 2: Glenmore Trail from 69th Street to 37th Street SW



Road Construction

- Construct Grey Eagle Boulevard and roundabout to 37th Street
- New eastbound lanes along Discovery Ridge
- Additional road construction where available

Bridge Construction

- Start bridge at 37th Street
- Driving piling for 37th Street in summer
- Driving piling for Westhills Way in summer
- Ongoing piling for Sarcee Trail interchange

Traffic Impacts

- Detour intersection at Sarcee Trail to the north
- Realign ramps at 37th Street
- Truck traffic on Highway 8 from haul road
- Speed reduction on Highway 8 / Glenmore Trail
- Access to / from Glenmore Trail at 37th Street will be maintained throughout construction
- Coordinate with the City of Calgary on the widening of Glenmore Trail

Elbow River Crossing

- Opened river realignment in April
- Complete three bridges and one tunnel
- Start two stormwater ponds
- Realign traffic on Weaselhead Road

SWCRR Roads & Ramps	Transportation Utility Corridor	Road Closure	Haul Road
SWCRR Bridges	Stormwater Ponds	Asphalt Plant	New Traffic Signal (2018)
Right-of-Way	Existing Roads	River Realignment	Number of lanes and direction of travel

For discussion purposes only – subject to change

Questions? Contact us:

24/7 phone: 403-212-0565

info@SWCRRproject.com

SWCRRproject.com

