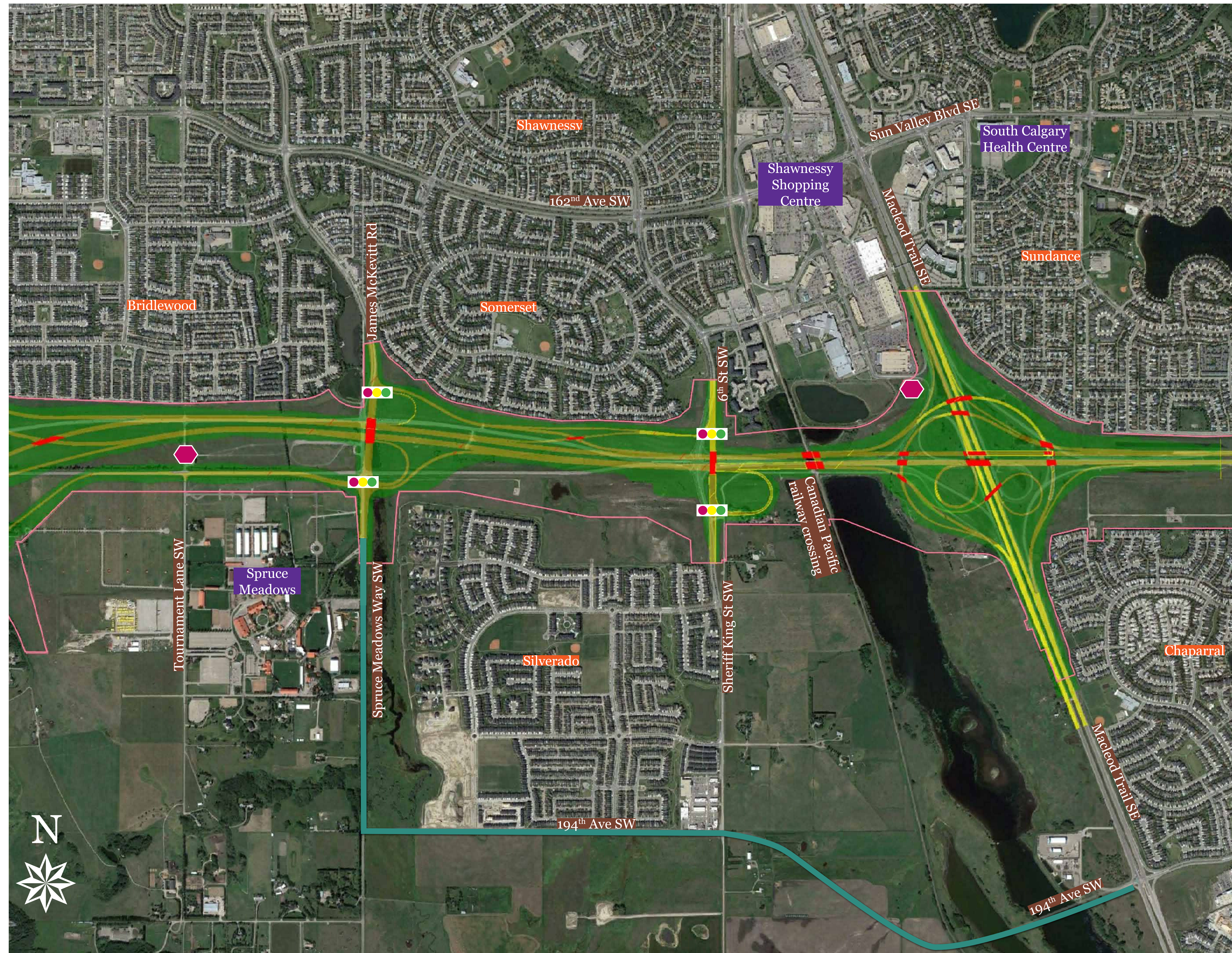


Southwest Calgary Ring Road

Segment 6: Highway 22x to Macleod Trail SE



2017 Construction Highlights

- Construction of new eastbound lanes along Highway 22X
- Construction of bridges over CP railway crossing and new westbound bridges at Macleod Trail SE
- Utility relocations along Highway 22X and Macleod Trail SE
- New construction haul truck access points at:
 - » James McKeivitt Road SW
 - » 6th Street SW
 - » CP railway crossing

What to Expect in 2017

- Periodic lane closures and speed reductions on Highway 22X and Macleod Trail SE
- Traffic realignments for ramps around Macleod Trail SW
- Closure of access from Tournament Lane SW to westbound Highway 22X in late 2017 (alternative access via Spruce Meadows Way SW)
- Increase in truck and equipment activity

SWCRR & Ramps	Landscaping	Public Centres	Transportation Utility Corridor	Road Closure
SWCRR Bridges	Existing Roads	Connection Upgrades	Construction by Others	Gated Emergency Access
SWCRR Pedestrian Bridges	Neighbourhoods	Waterways	Traffic Lights	SWCRR Roundabout

Questions? Contact us:

24/7 phone: 403-212-0565

info@SWCRRproject.com

SWCRRproject.com

