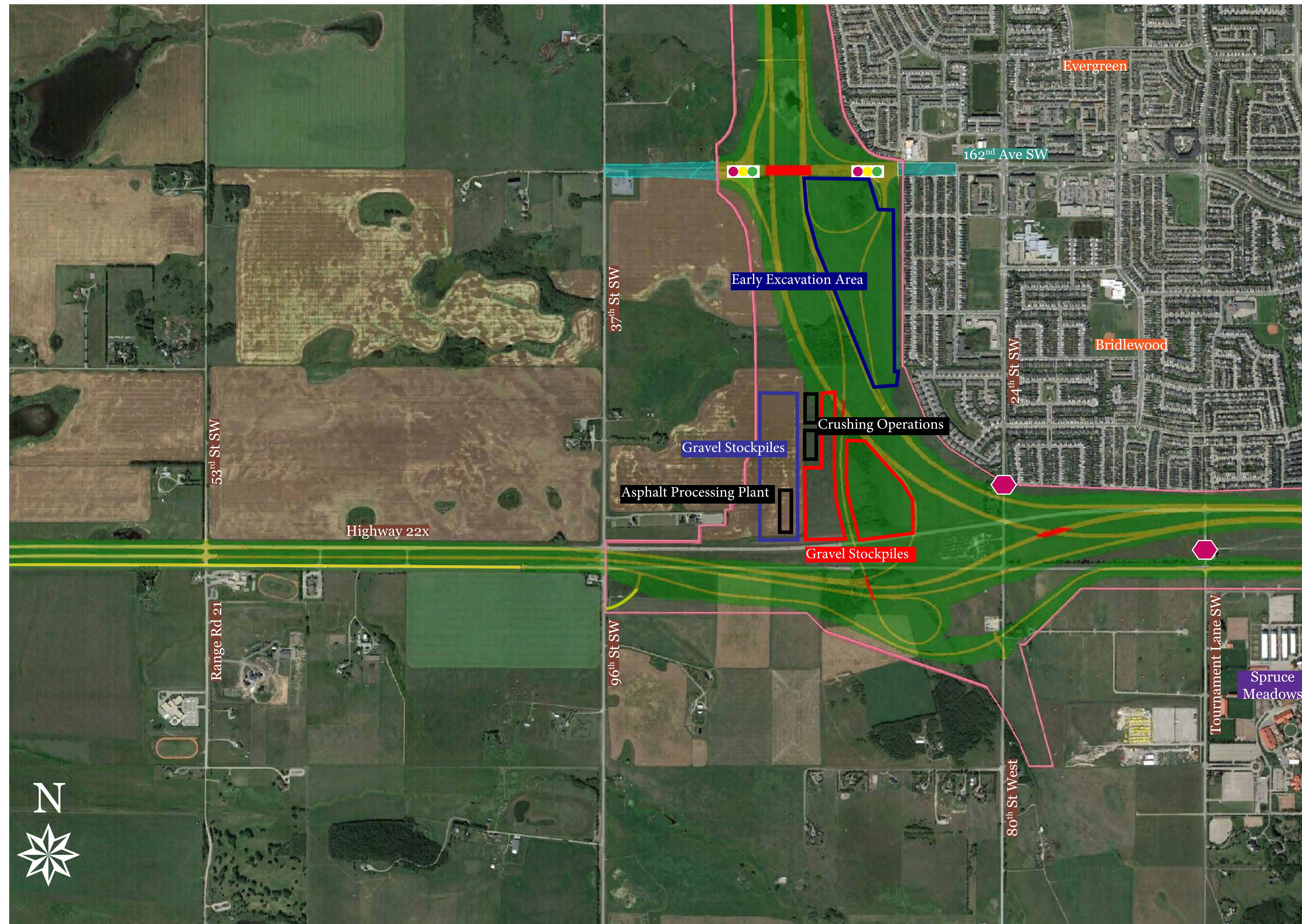


Southwest Calgary Ring Road

Segment 5: 162nd Avenue SW to Highway 22x



2017 Construction Highlights

- Construction of new eastbound lanes along Highway 22X
- Ongoing gravel processing from the excavation near 162nd Avenue SW, with an asphalt plant set up on the site in the late summer of 2017

What to Expect in 2017

- Closure of access from 24th Street SW to Highway 22X in the spring of 2017
- Closure of access from Tournament Lane SW to westbound Highway 22X in late 2017 (alternative access via Spruce Meadows Way SW)
- Periodic lane closures and speed reductions on Highway 22X
- Increase in truck and equipment activity

Safety in Construction Zones

- Slow down and obey construction signs and speed limits
- Be alert for workers, traffic control personnel and equipment

SWCRR & Ramps	Landscaping	Public Centres	Transportation Utility Corridor	Road Closure
SWCRR Bridges	Existing Roads	Connection Upgrades	Construction by Others	Gated Emergency Access
SWCRR Pedestrian Bridges	Neighbourhoods	Waterways	Traffic Lights	SWCRR Roundabout

Questions? Contact us:

24/7 phone: 403-212-0565

info@SWCRRproject.com

SWCRRproject.com

