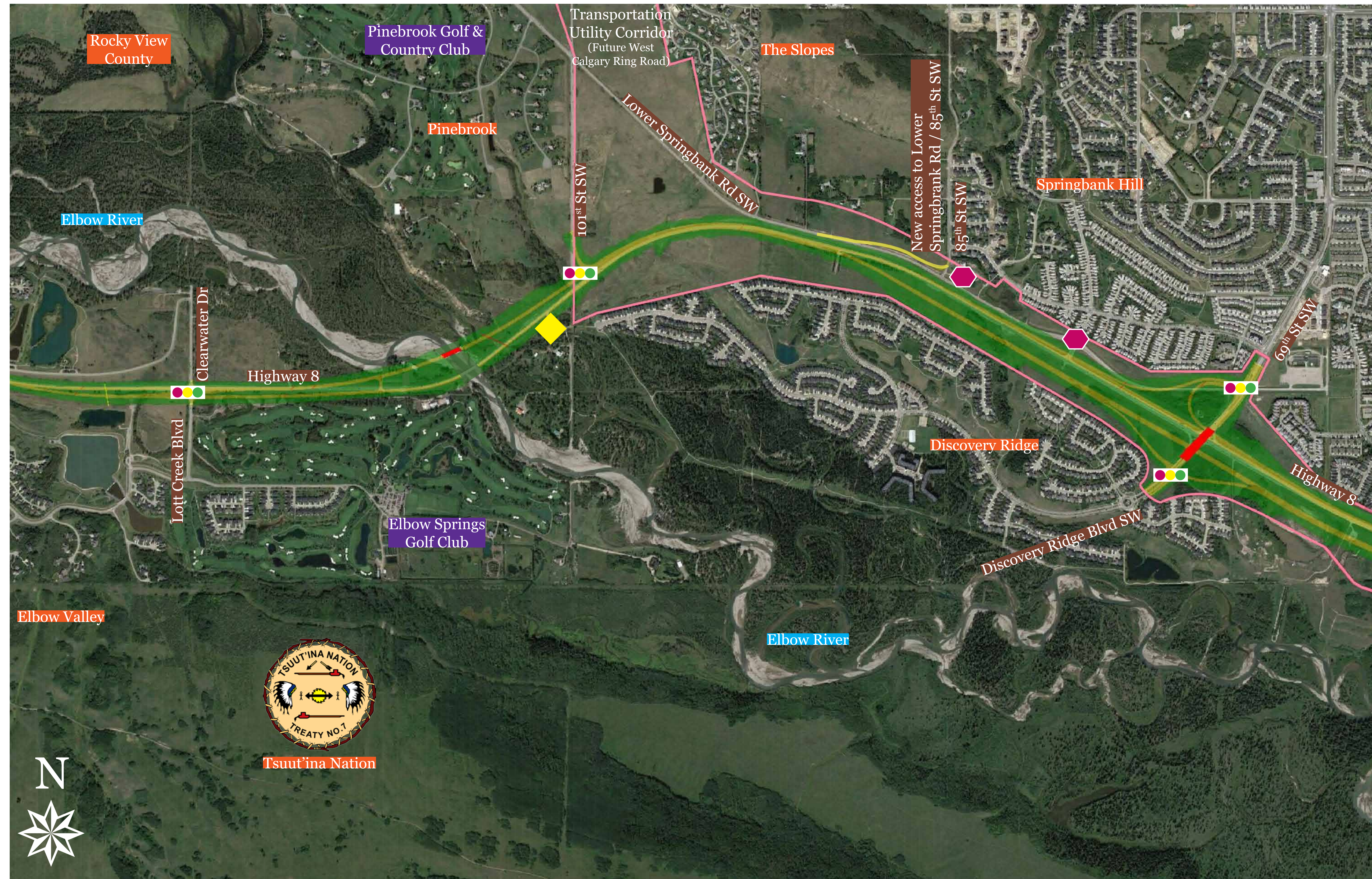


# Southwest Calgary Ring Road

## Segment 1: Highway 8 to 69<sup>th</sup> Street SW



### 2017 Construction Highlights

- Construction of new eastbound lanes along Highway 8 and Glenmore Trail
- Bridge construction including earthworks and piling on Highway 8 at the Elbow River
- Intersection upgrades at Highway 8 and 69<sup>th</sup> Street SW
- Development of a gravel pit and crushing operations near Old Banff Coach Road SW
- Construction of a haul road from the gravel pit to Highway 8 (crossing 17<sup>th</sup> Avenue and Lower Springbank Road SW)

### What to Expect in 2017

- Periodic lane closures and speed reductions on Highway 8
- Increase in truck and equipment traffic
- Closure of access from Lower Springbank Road SW to Highway 8 in 2018

### Traffic & Construction Updates

- Advisories for upcoming work will be regularly added to the project website

Questions? Contact us:

24/7 phone: 403-212-0565

[info@SWCRRproject.com](mailto:info@SWCRRproject.com)

[SWCRRproject.com](http://SWCRRproject.com)

