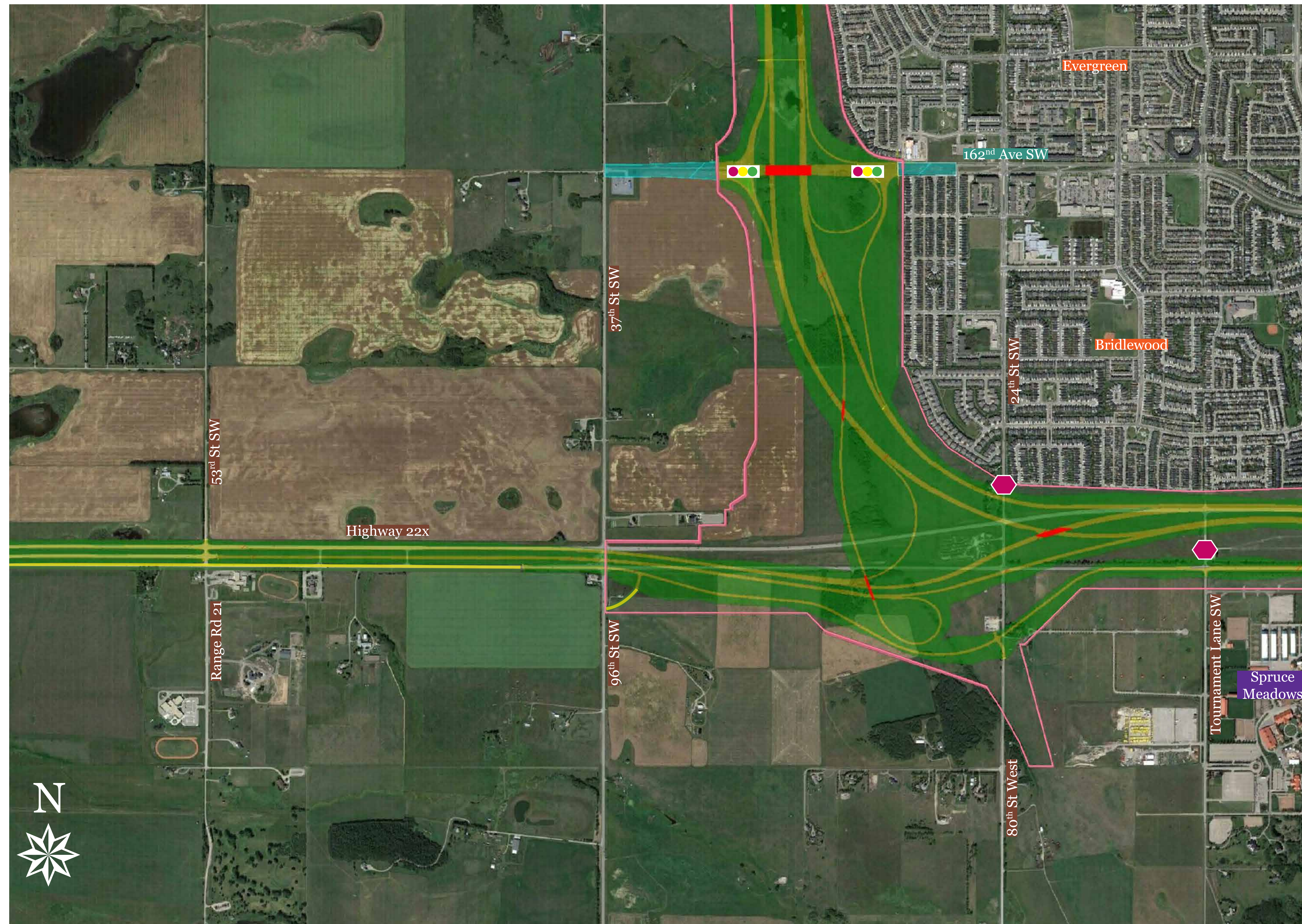


Southwest Calgary Ring Road

Segment 5: 162nd Avenue SW to Highway 22x



2017 Construction Highlights

- Road construction including earthworks and paving on Highway 22X from 69th Street to Tournament Lane SW

What to Expect in 2017

- Closure of access to Highway 22X from 24th Street SW in fall 2017
- Closure of access to westbound Highway 22X from Tournament Lane SW in late 2017 (alternative access via Spruce Meadows Way SW)
- Minor delays due to periodic lane closures and speed reductions on Highway 22X
- Increased truck and equipment activity

Safety in Construction Zones

- Slow down and obey construction signs and speed limits
- Be alert for workers, traffic control personnel and equipment

SWCRR & Ramps	Landscaping	Public Centres	Transportation Utility Corridor	Road Closure
SWCRR Bridges	Existing Roads	Connection Upgrades	Construction by Others	Gated Emergency Access
SWCRR Pedestrian Bridges	Neighbourhoods	Waterways	Traffic Lights	SWCRR Roundabout

Questions? Contact us:

24/7 phone: 403-212-0565

info@SWCRRproject.com

SWCRRproject.com

