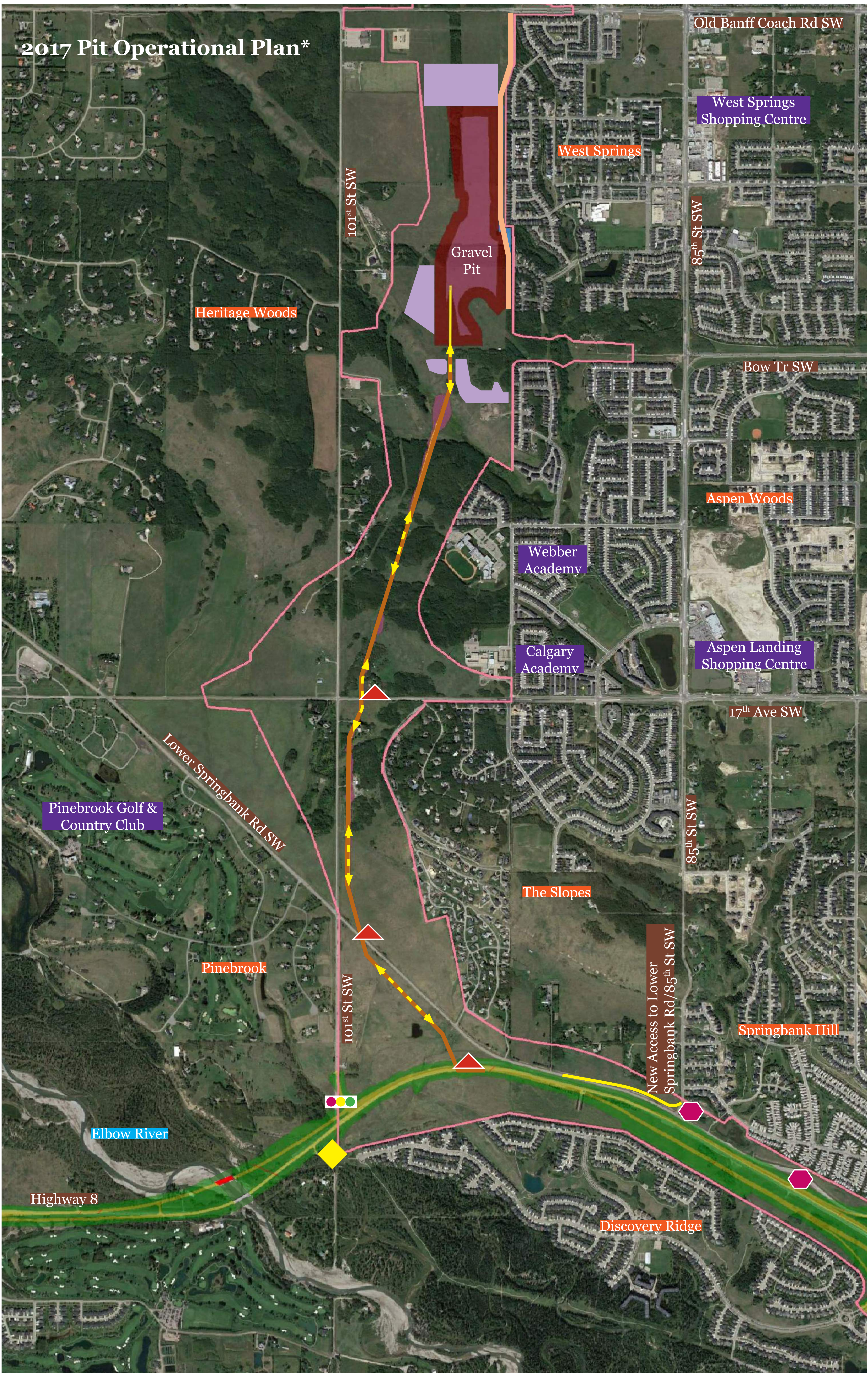


Southwest Calgary Ring Road

Gravel Pit & Haul Road

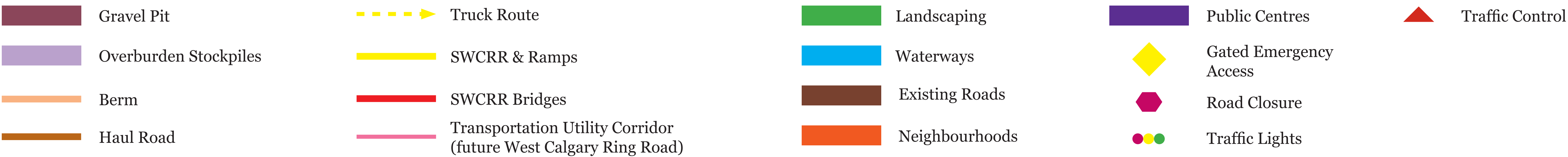


Gravel Pit & Haul Road

- Gravel pit and haul road will be constructed south of Old Banff Coach Road SW:
 - » In the existing Transportation Utility Corridor
 - » Between 101st Street SW and the community of West Springs
- Gravel pit will provide a significant portion of material needed to build the SWCRR
- Haul road is required to move gravel out of the gravel pit:
 - » It will not be open to public traffic
- Site equipment within this area will include:
 - » Excavators
 - » Scrapers
 - » Loaders
 - » Crushing equipment
 - » Work trucks
 - » Miscellaneous machinery

What to Expect in 2017

- Earthworks and construction to begin in March 2017:
 - » Early activities include stripping topsoil to create earth wall (berm) between gravel pit and neighbouring community - helping mitigate noise and dust
 - » Berm construction to be completed in approximately four to six weeks
 - » Crushing of gravel expected to start April 2017
- Increase in truck and equipment traffic:
 - » Loaded gravel trucks will start on the haul road in summer 2017
 - » Empty trucks will return up the haul road, removing truck traffic from 101st Street SW
 - » Truck activity could remain active for the duration of construction for SWCRR
- Traffic control will be implemented where the haul road crosses 17th Avenue and Lower Springbank Road S.W., and at the intersection with Highway 8:
 - » Potential for minor traffic delays



Questions? Contact us:

24/7 phone: 403-212-0565

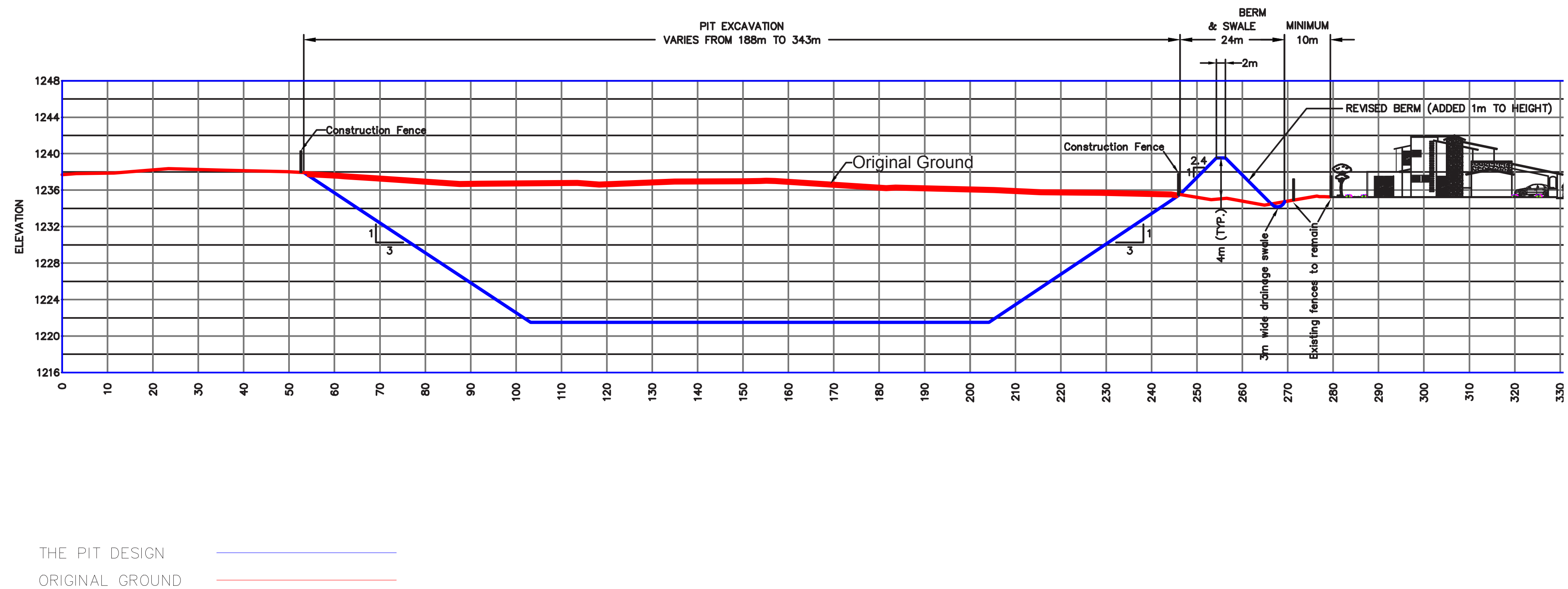
info@SWCRRproject.com

SWCRRproject.com



Southwest Calgary Ring Road

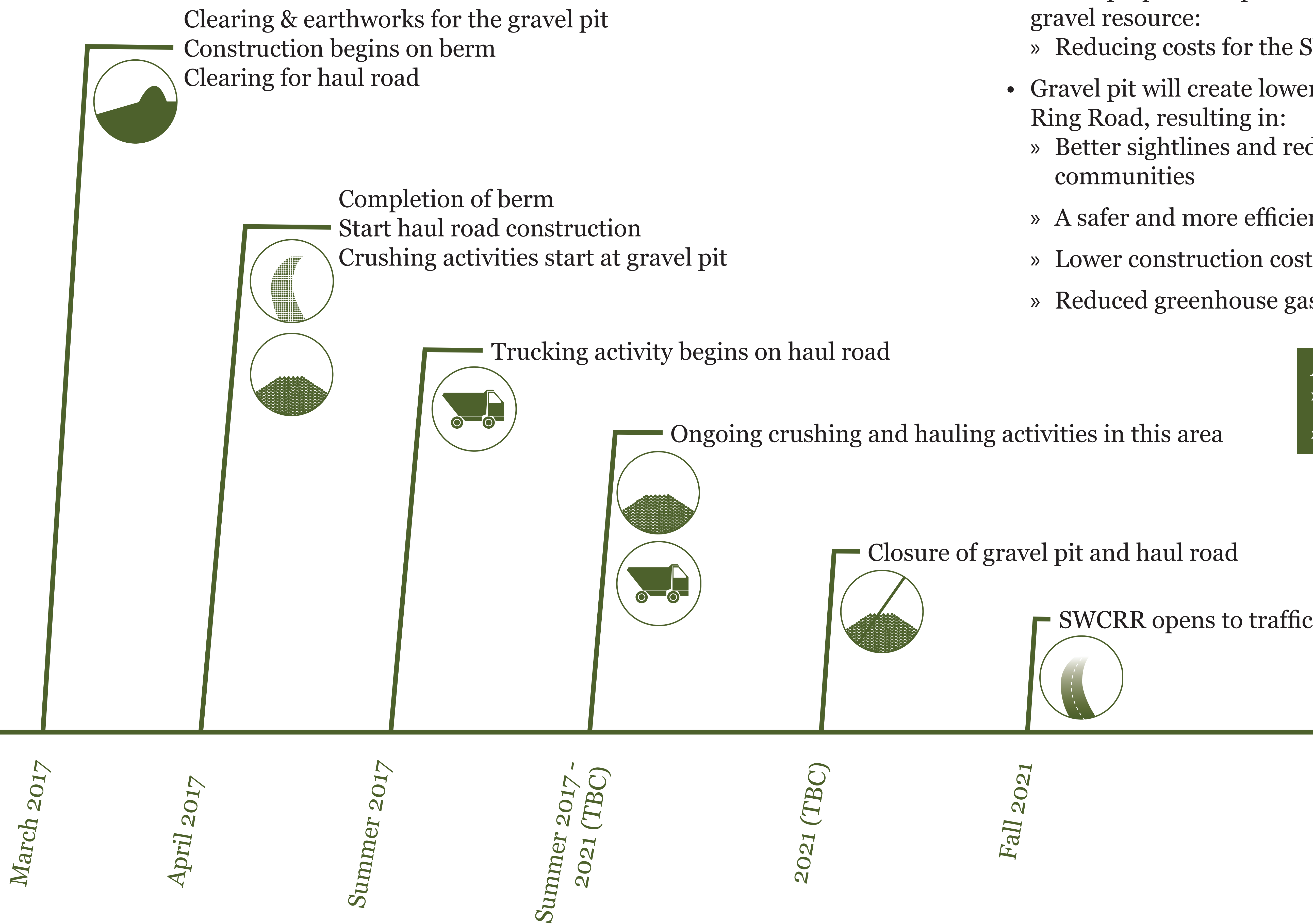
Gravel Pit & Haul Road



Example of a cross section of the gravel pit, including berm

Please refer to the Gravel Pit & Haul Road map for the approximate location of the berm

Expected Schedule of Construction Activities for the Gravel Pit & Haul Road



Activities limited to working hours:
» Mondays to Saturdays 8am – 8pm
» Sundays and holidays 9am – 8pm

Mitigation Measures

- Berm between gravel pit and neighbouring community:
 - » Approximately 4 metres tall and 20 metres wide
 - » Berm will be grassed to prevent erosion and weeds
 - » Trees will be planted near berm to help reduce site impacts
- Minimum 10 metre buffer between community and berm
- Ongoing noise and dust monitoring
 - » Installation of air quality and noise level monitoring equipment
 - » Noise levels to decrease as pit deepens
 - » Noise level restriction of 65 decibels (average during work hours)
 - » Dust mitigation activities, including watering and dust palliative applications
- White noise back-up alarms will be used on equipment
- Site lighting will only be used as needed during work hours
- Perimeter fences to restrict access
- After completion of gravel pit activities, the pit will be reclaimed (contour, topsoil and grass)

Benefits

- Gravel pit provides proximity access to costly, non-renewable gravel resource:
 - » Reducing costs for the SWCRR
- Gravel pit will create lower profile for future West Calgary Ring Road, resulting in:
 - » Better sightlines and reduced noise for adjacent communities
 - » A safer and more efficient highway
 - » Lower construction costs for the West Calgary Ring Road
 - » Reduced greenhouse gas emission from the roadway

Questions? Contact us:

24/7 phone: 403-212-0565

info@SWCRRproject.com

SWCRRproject.com

